



GRENADIER
HOMES

\$799,990

2724 Riverbrook Way

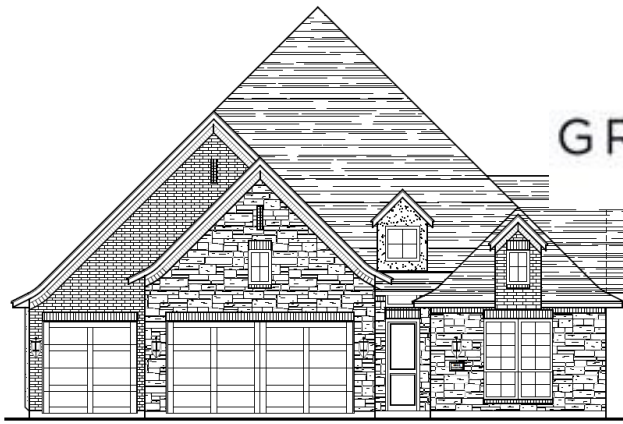
Lt 3 Blk 4 approx. 12,429 sf lot

3 Bedroom 3 Bath 3 Car

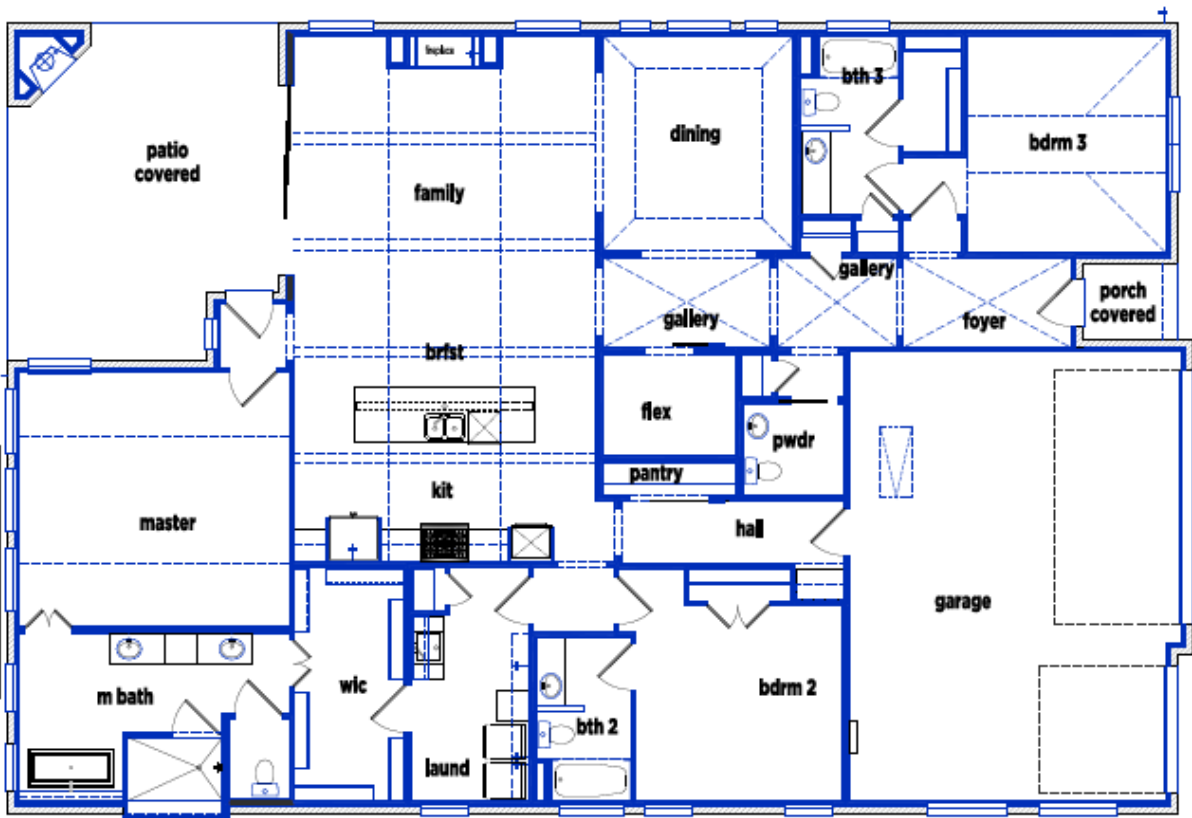
Flex Space could be a study or wine room

Oversized Lake Lot with northern exposure

Covered Patio w gas fireplace & sun screens



SOUTH VILLAGE



conditioned /market /slab square footage:

first floor market	2705 sq. ft.
second floor market	0 sq. ft.
market sub-total	2705 sq. ft.
garage	630 sq. ft.
covered patios	300 sq. ft.
covered porches	28 sq. ft.
total slab	3744 sq. ft.
slab w/ transfer roof	3744 sq. ft.
number of conditioned space	
first floor market perimeter	347'-0"
second floor perimeter	0'-0"
width & depth	49'-0" x 70'-0"

2924 Riverbrook Way - 5045 - Jasmine
A/C sq ft 2705

2/15/18

Floor plan shown is a preliminary drawing only and may not accurately represent the actual condition of the home as constructed.

Gated Master Planned Community in Southlake REALTOR Tracey Schultz (817) 296-4933



GRENADIER HOMES

KEY

- Available Lot
- Inventory Home
- Sold Home
- Unavailable
- Sale Pending

SOUTHLAKE WATERMERE HOLDINGS, LP
DOCUMENT NO. 0319525634
LOT 4R2, BLOCK 1
WATERMERE AT SOUTHLAKE
DOC. NO. 0212033579
L.I.D. MD-RES
EXISTING ZONING: SP-2

