

# Augusta

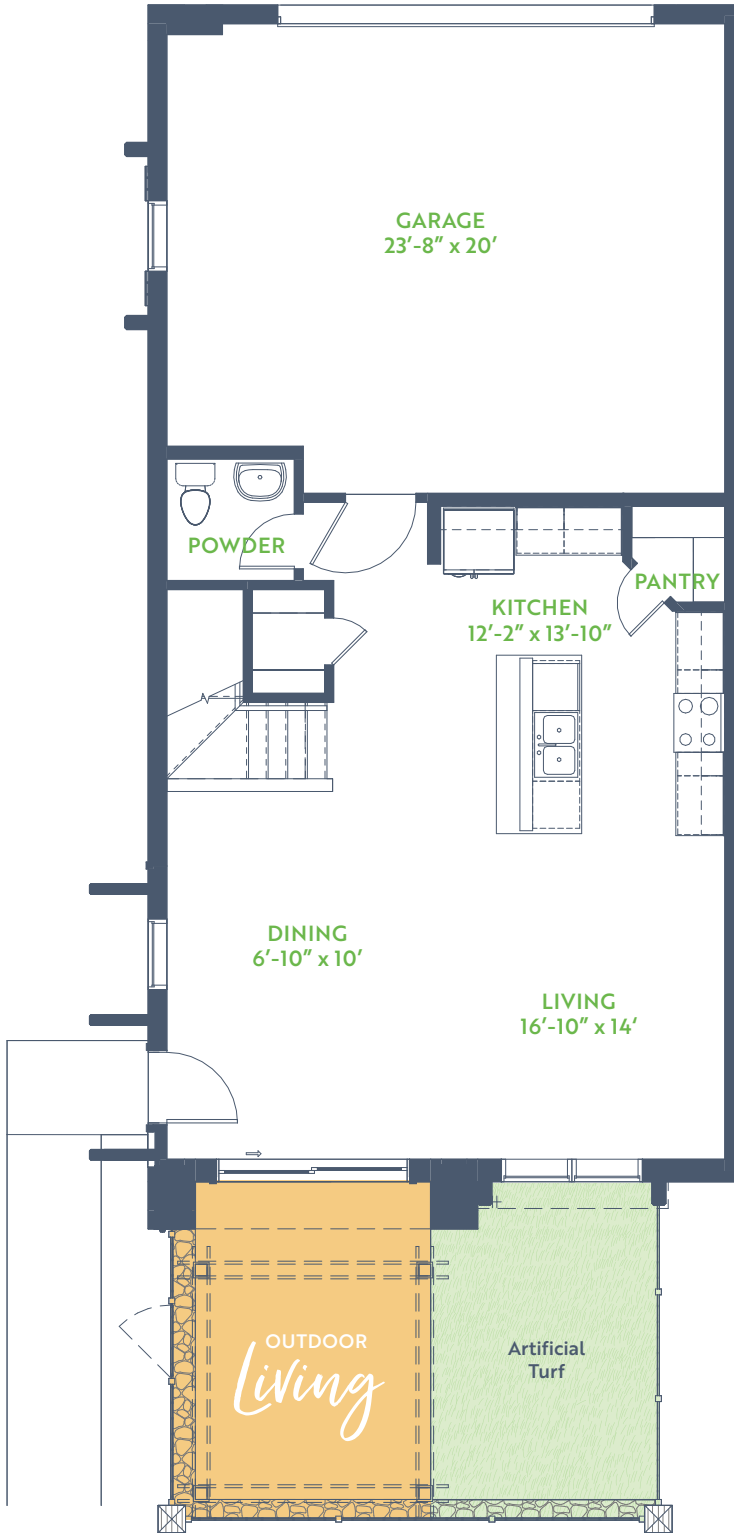
PLAN 2562

THE TRIBUTE TOWNHOMES

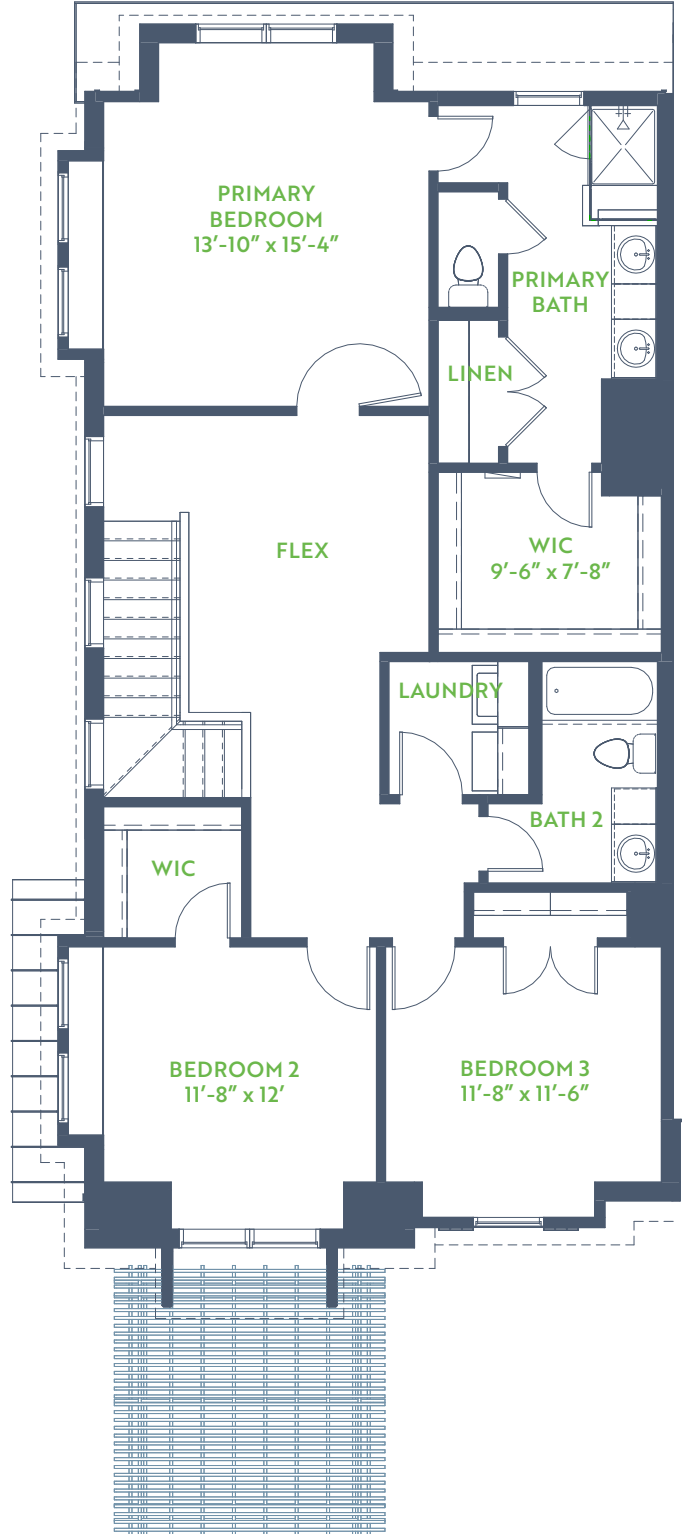
3 Bedroom • 2.5 Baths  
Outdoor Living • Covered Balcony

2 Story • 1,960 SQ. FT.

## 1<sup>ST</sup> FLOOR *9'↑ Ceiling*



## 2<sup>ND</sup> FLOOR *9'↑ Ceiling*

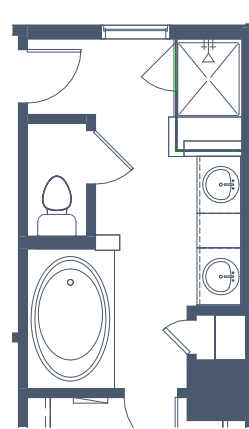
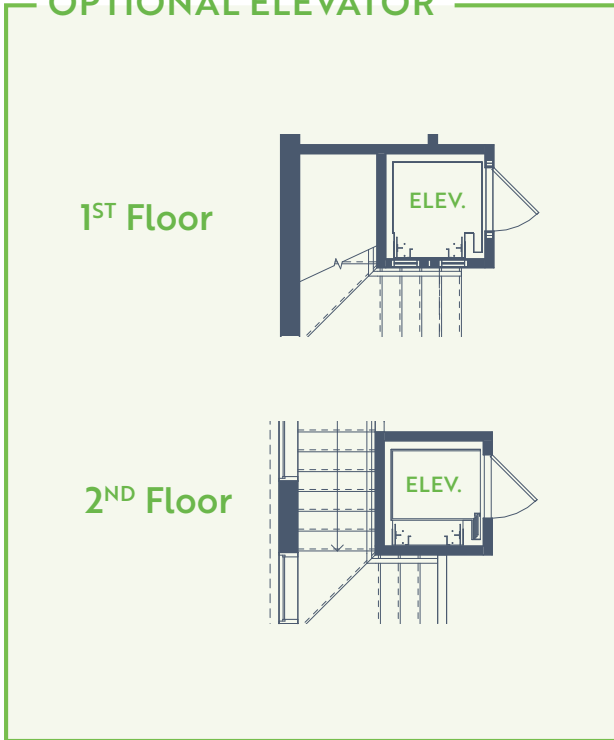


**GRENADIER HOMES**

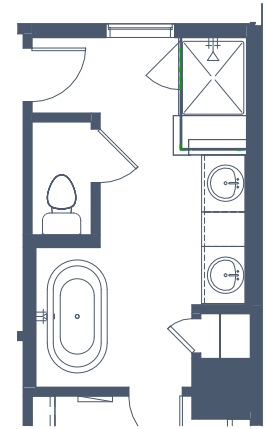
Floorplans are subject to change. There may be small differences between the plan shown and the final product purchased. We endeavor to continually improve our plans and processes, so please consult your sales counselor or the Grenadier Homes website for the most current version of this plan. Rev. 12/20



## OPTIONAL ELEVATOR



OPTIONAL PRIMARY  
BATH TUB 1



OPTIONAL PRIMARY  
BATH TUB 2



OPTIONAL  
FIREPLACE 1



OPTIONAL  
FIREPLACE 2



OPTIONAL  
FIREPLACE 3