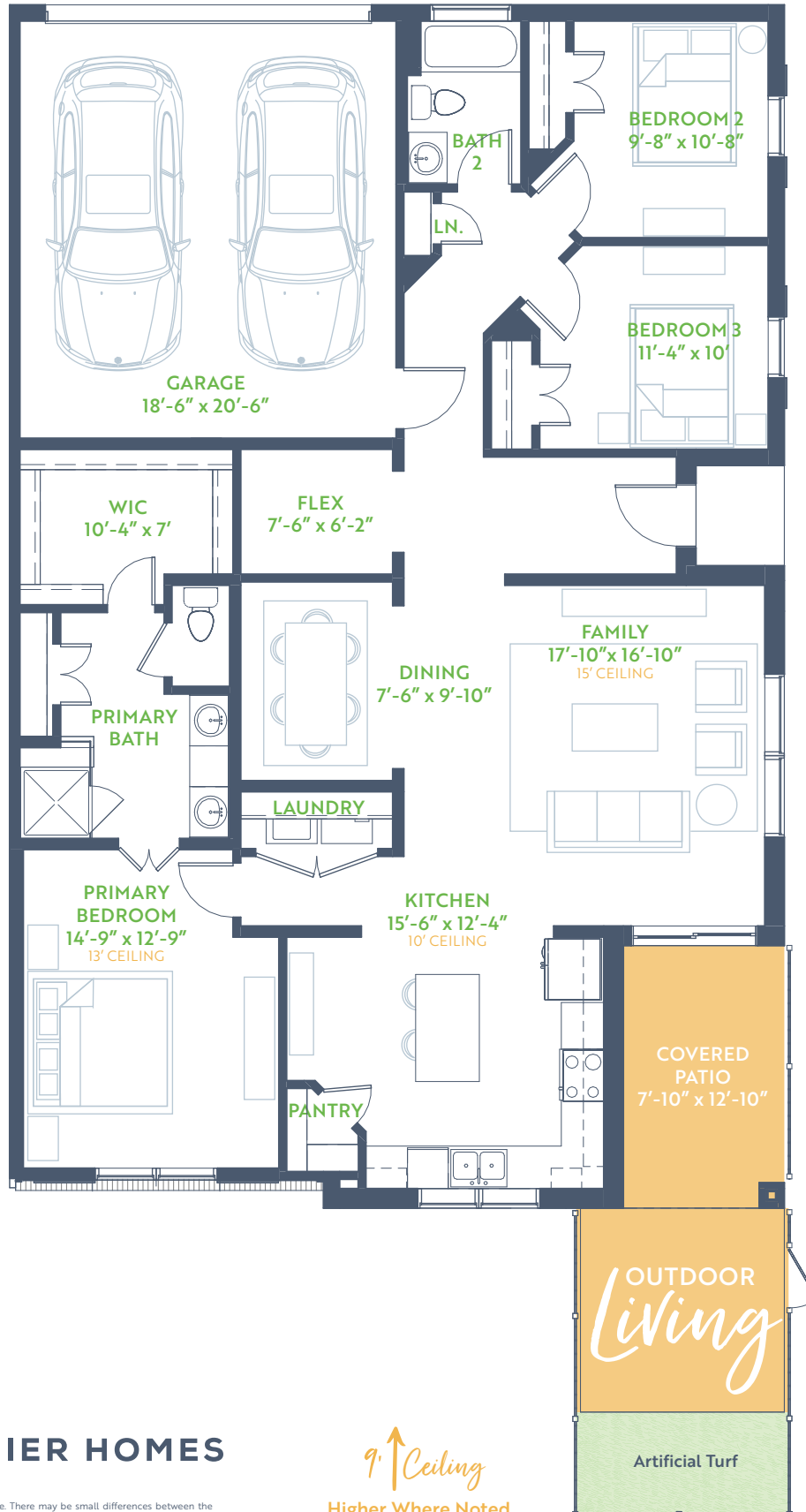


The Waterview

COTTONWOOD CREEK VILLAS

3 Bedroom • 2 Bath
Outdoor Living

1 Story • 1,701 SQ. FT.



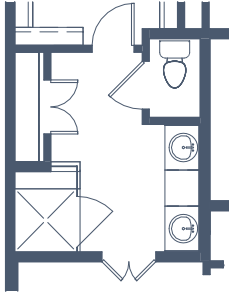
GRENADIER HOMES

Floorplans are subject to change. There may be small differences between the plan shown and the final product purchased. We endeavor to continually improve our plans and processes, so please consult your sales counselor or the Grenadier Homes website for the most current version of this plan. Rev. 7/2024

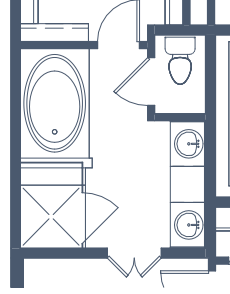
9' ↑ Ceiling
Higher Where Noted

PLAN 3851

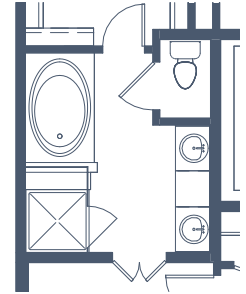




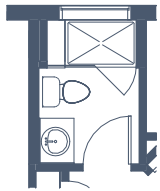
OPTIONAL PRIMARY BATH
NO-STEP SHOWER



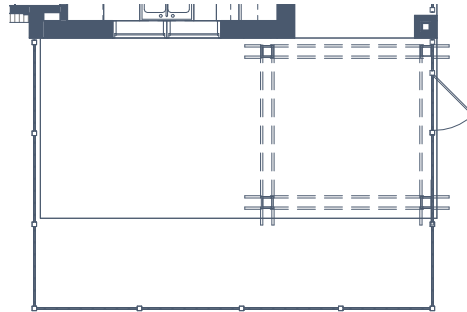
OPTIONAL PRIMARY BATH
NO-STEP SHOWER & TUB



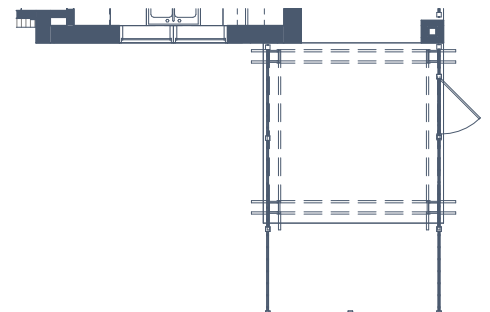
OPTIONAL PRIMARY
BATH TUB



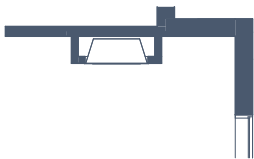
OPTIONAL BATH 2 SHOWER



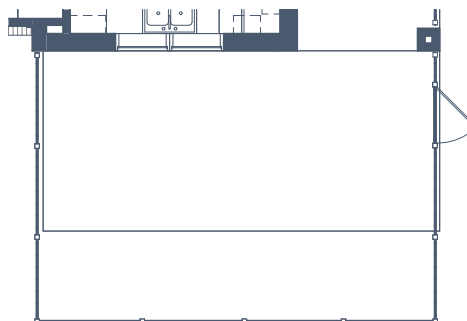
OPTIONAL TRELLIS &
EXTENDED PATIO



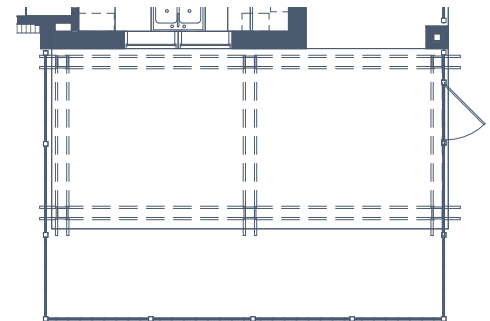
OPTIONAL TRELLIS



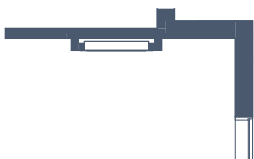
OPTIONAL GAS FIREPLACE



OPTIONAL EXTENDED PATIO



OPTIONAL EXTENDED PATIO
WITH EXTENDED TRELLIS



OPTIONAL ELECTRIC FIREPLACE



GRENADIER HOMES

PLAN 3851

Floorplans are subject to change. There may be small differences between the plan shown and the final product purchased. We endeavor to continually improve our plans and processes, so please consult your sales counselor or the Grenadier Homes website for the most current version of this plan. Rev. 7/2024

