

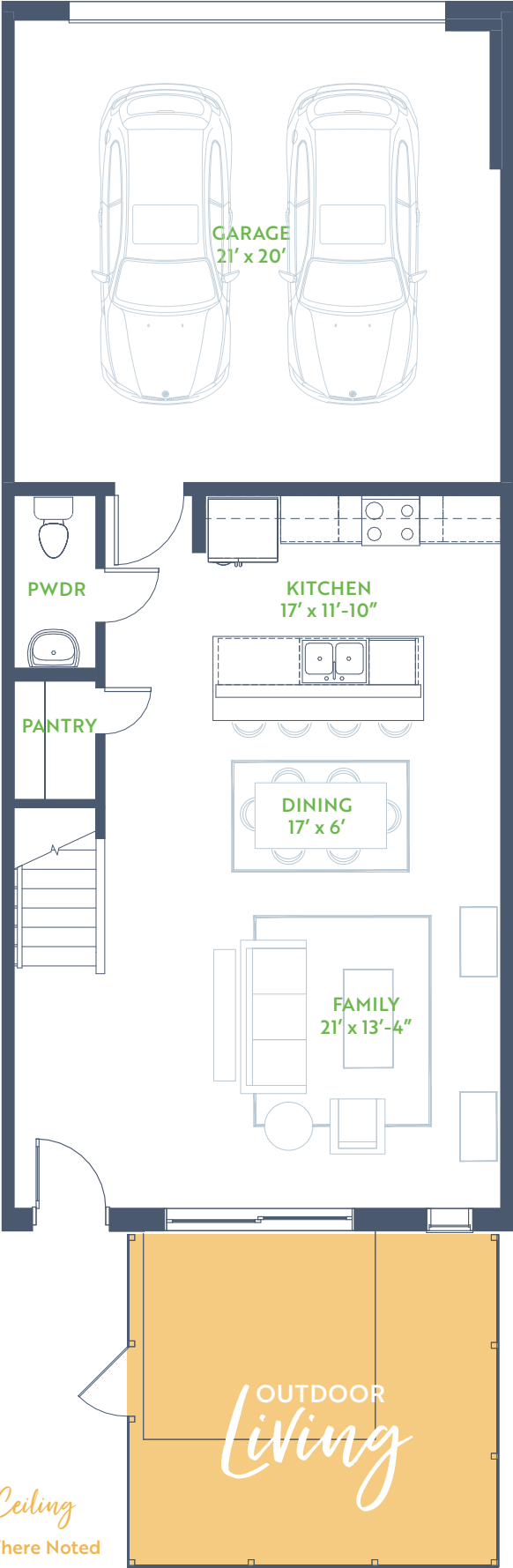
# The Aspen

WILLOW GROVE TOWNHOMES

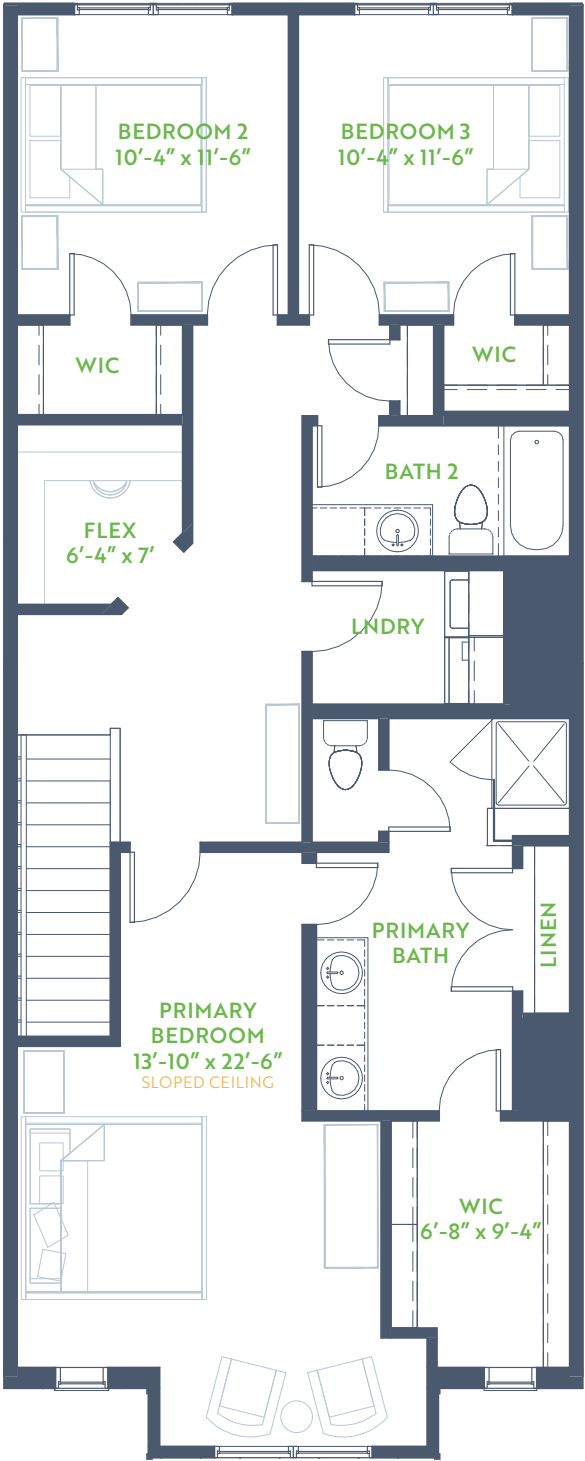
3 Bedroom • 2.5 Bath  
Outdoor Living

2 Story • 1,871 SQ. FT.

1ST FLOOR



2ND FLOOR



9'↑ Ceiling  
Higher Where Noted



GRENADIER HOMES

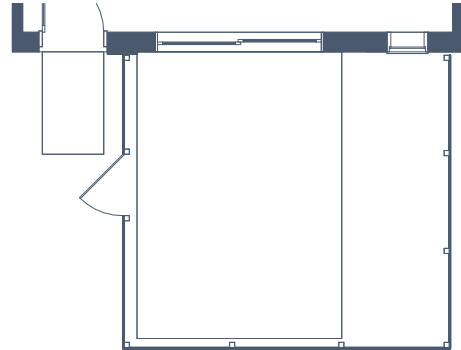
PLAN 2220

Floorplans are subject to change. There may be small differences between the plan shown and the final product purchased. We endeavor to continually improve our plans and processes, so please consult your sales counselor or the Grenadier Homes website for the most current version of this plan. Rev. 12/20

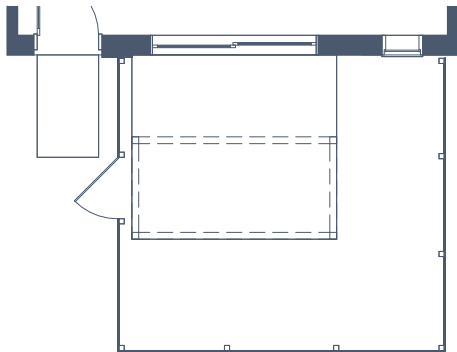




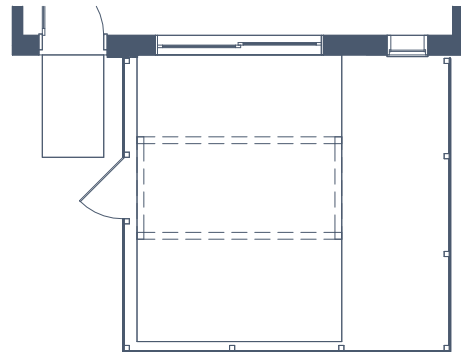
OPTIONAL FIREPLACE



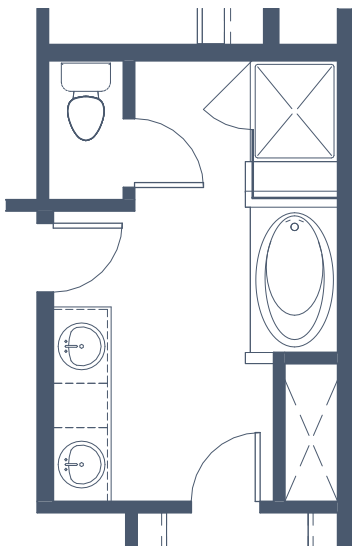
EXTENDED PATIO



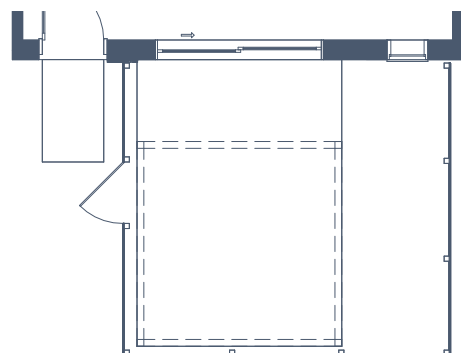
OPTIONAL TRELLIS



EXTENDED PATIO & OPTIONAL TRELLIS



OPTIONAL PRIMARY BATH  
GARDEN TUB



EXTENDED PATIO & EXTENDED TRELLIS