

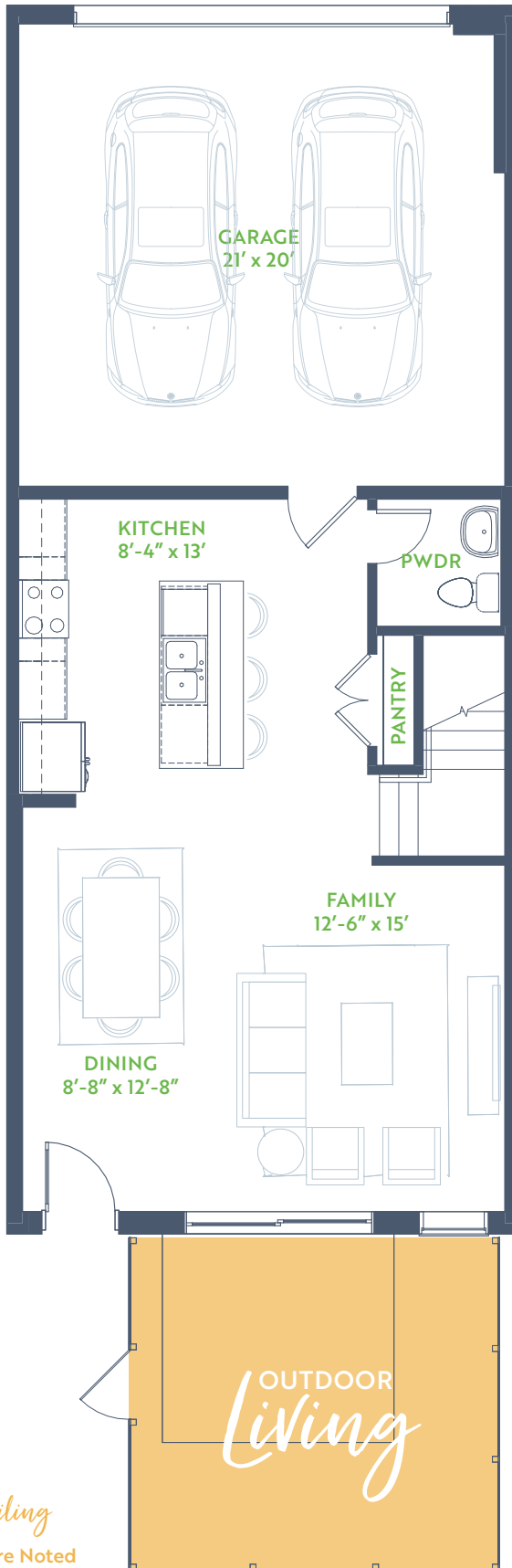
The Birch

WILLOW GROVE TOWNHOMES

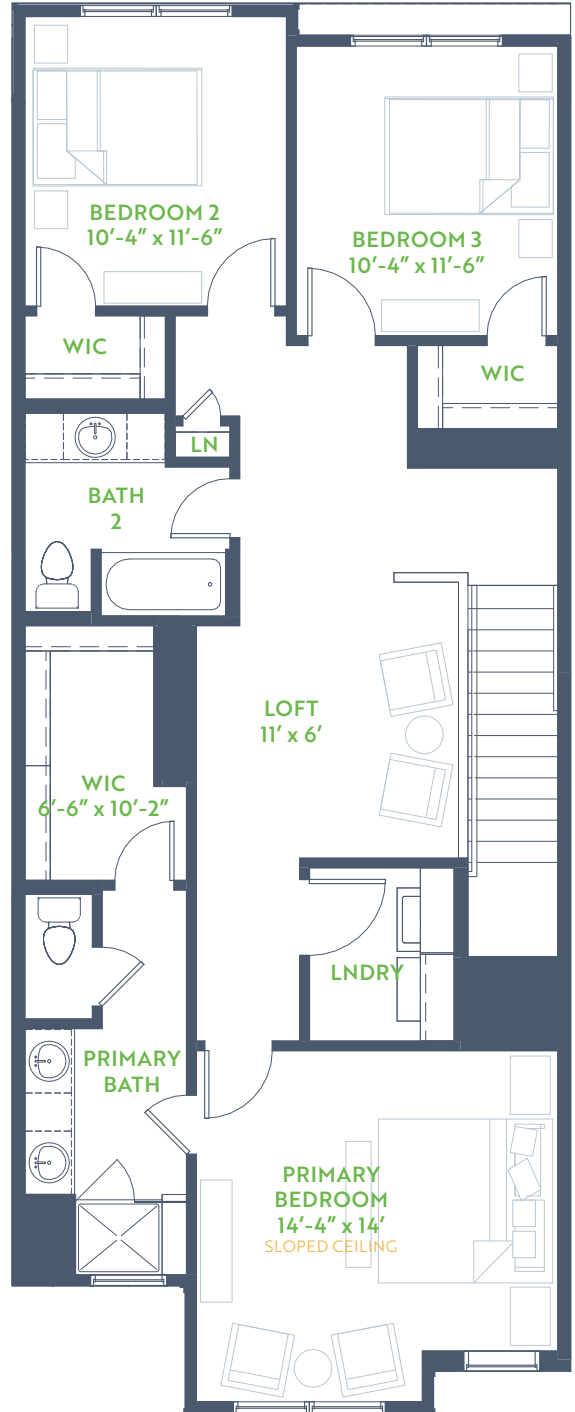
3 Bedroom • 2.5 Bath
Outdoor Living

2 Story • 1,847 sq. FT.

1ST FLOOR



2ND FLOOR



9' ↑ Ceiling
Higher Where Noted

 **GRENADIER HOMES**

PLAN 2221

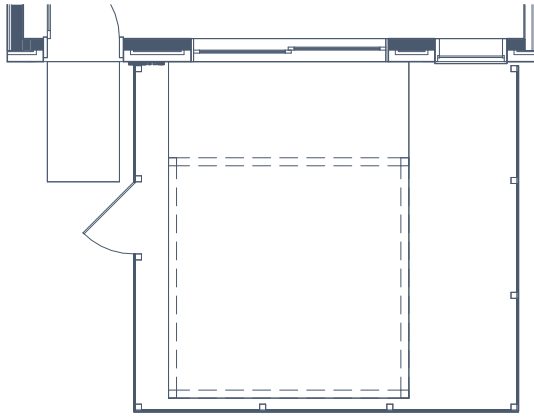
Floorplans are subject to change. There may be small differences between the plan shown and the final product purchased. We endeavor to continually improve our plans and processes, so please consult your sales counselor or the Grenadier Homes website for the most current version of this plan. Rev. 12/20



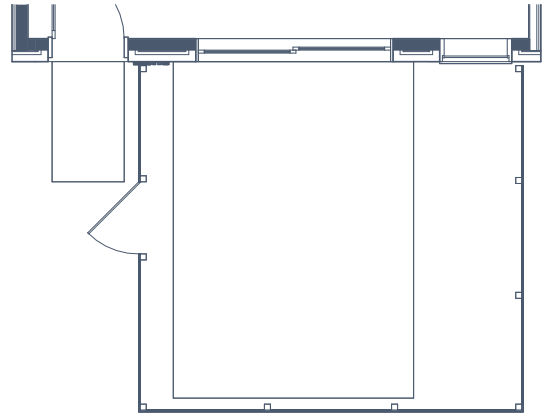
The Birch

WILLOW GROVE TOWNHOMES

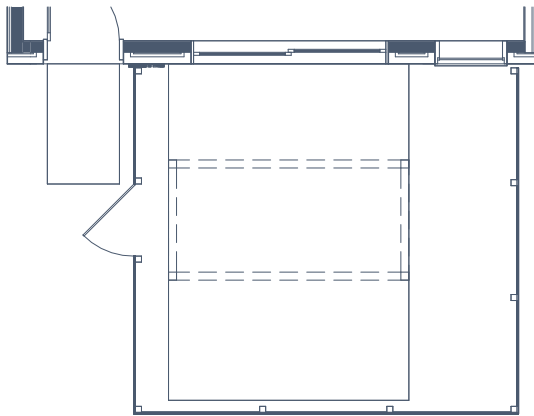
Floor Plan Options



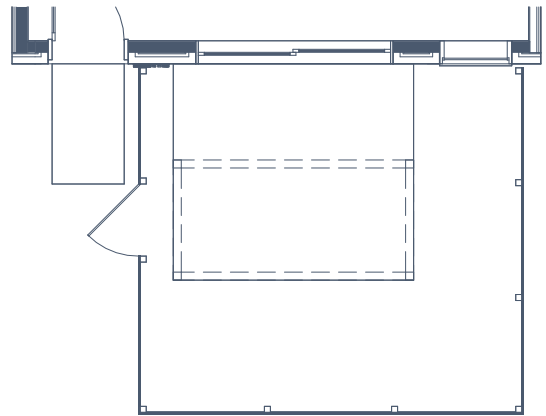
EXTENDED PATIO & EXTENDED TRELLIS



EXTENDED PATIO



EXTENDED PATIO & OPTIONAL TRELLIS



OPTIONAL TRELLIS



OPTIONAL FIREPLACE



GRENADIER HOMES

PLAN 2221

Floorplans are subject to change. There may be small differences between the plan shown and the final product purchased. We endeavor to continually improve our plans and processes, so please consult your sales counselor or the Grenadier Homes website for the most current version of this plan. Rev. 12/20

