

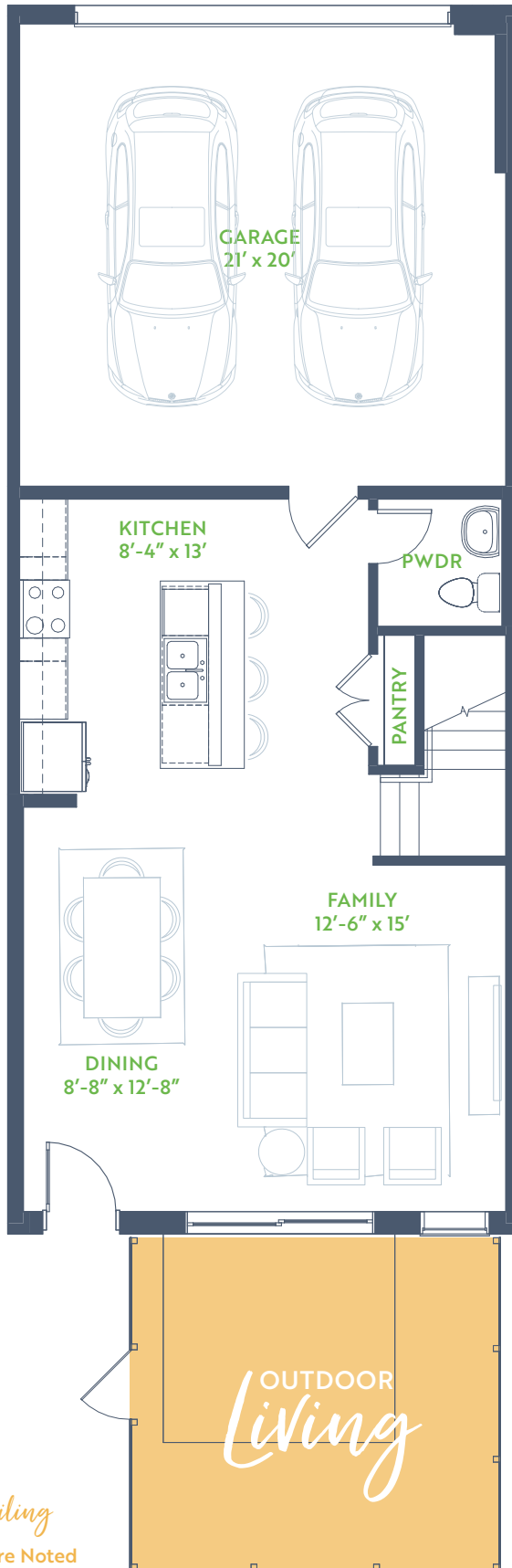
# The Birch

WILLOW GROVE TOWNHOMES

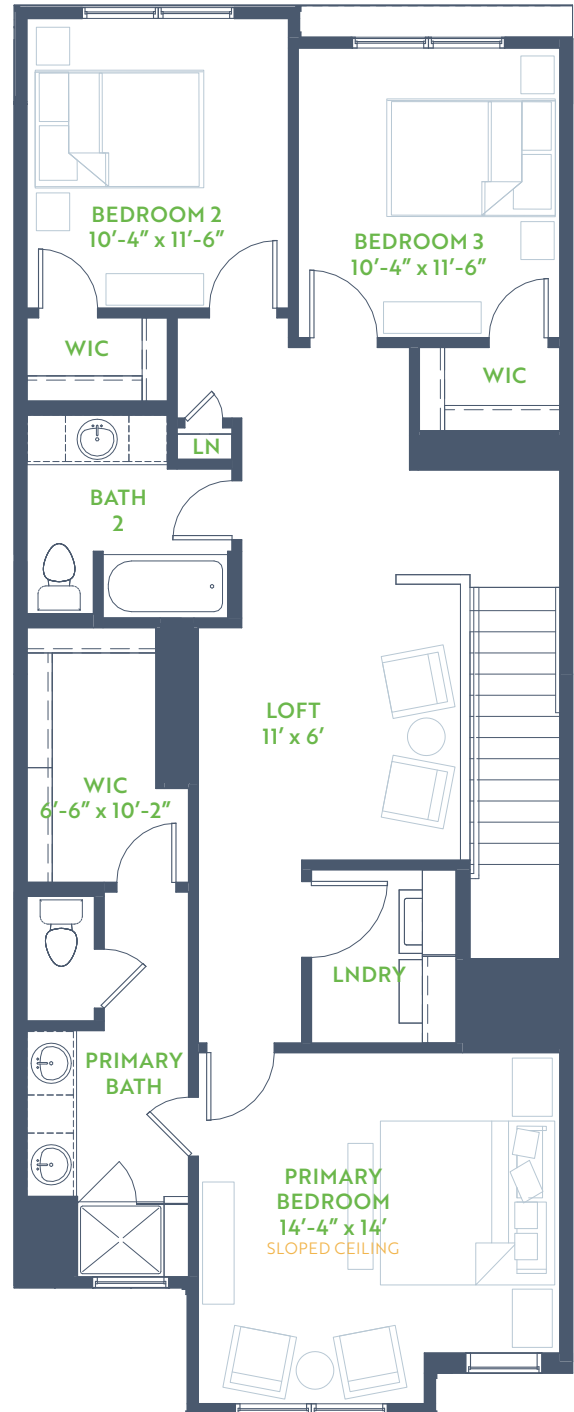
3 Bedroom • 2.5 Bath  
Outdoor Living

2 Story • 1,840 sq. ft.

1ST FLOOR



2ND FLOOR



9' ↑ Ceiling  
Higher Where Noted



GRENADIER HOMES

PLAN 2221

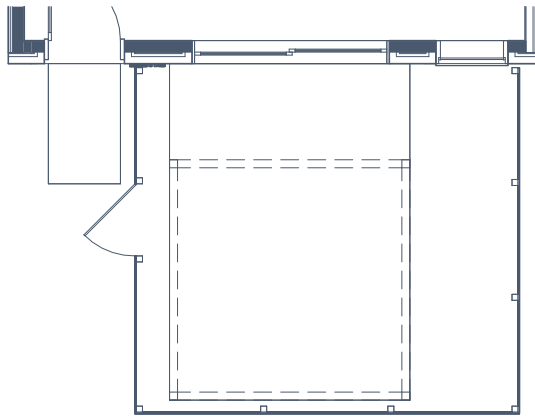
Floorplans are subject to change. There may be small differences between the plan shown and the final product purchased. We endeavor to continually improve our plans and processes, so please consult your sales counselor or the Grenadier Homes website for the most current version of this plan. Rev. 12/20



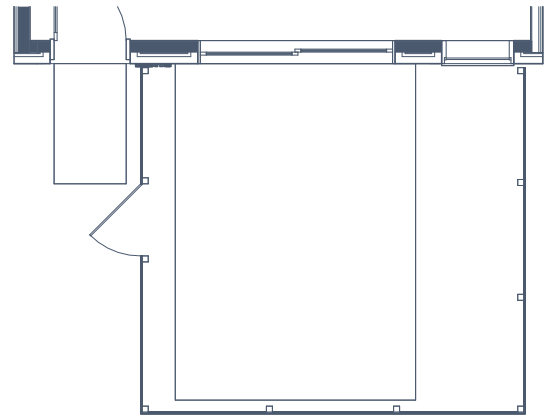
# The Birch

## WILLOW GROVE TOWNHOMES

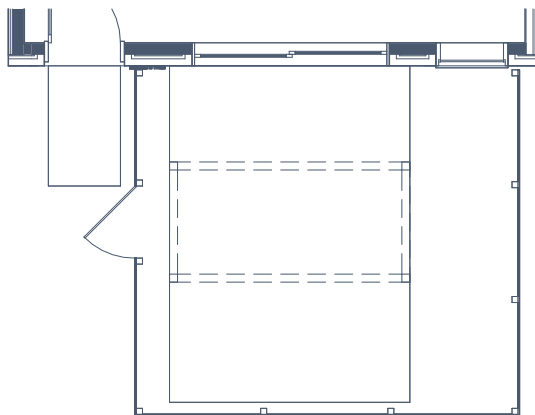
### Floor Plan Options



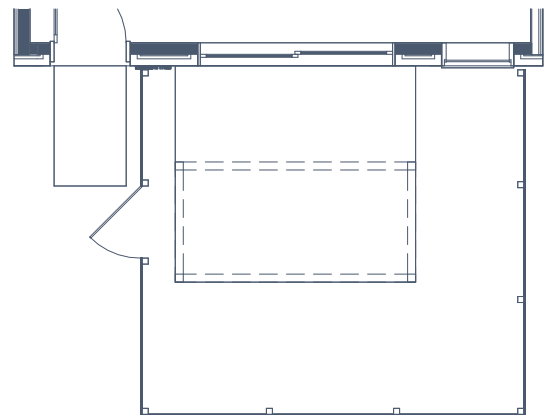
EXTENDED PATIO & EXTENDED TRELLIS



EXTENDED PATIO



EXTENDED PATIO & OPTIONAL TRELLIS



OPTIONAL TRELLIS



OPTIONAL FIREPLACE



**GRENADIER HOMES**

**PLAN 2221**

Floorplans are subject to change. There may be small differences between the plan shown and the final product purchased. We endeavor to continually improve our plans and processes, so please consult your sales counselor or the Grenadier Homes website for the most current version of this plan. Rev. 12/20

