

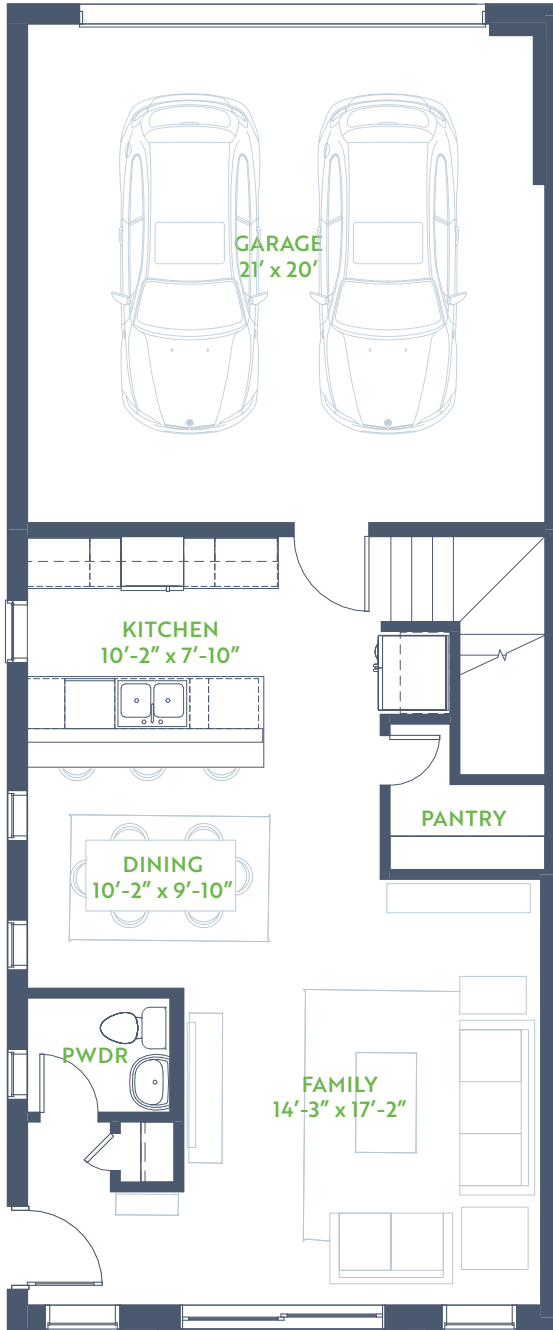
The Elm

WILLOW GROVE TOWNHOMES

3 Bedroom • 2.5 Bath
Outdoor Living

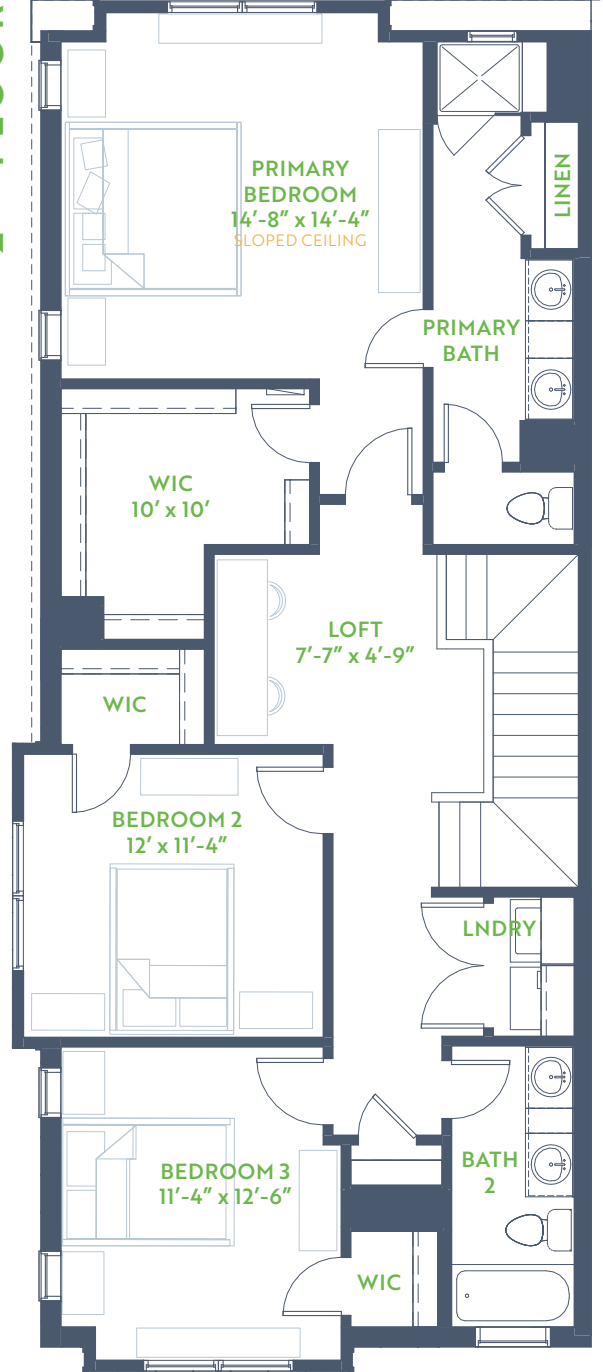
2 Story • 1,854 SQ. FT.

1ST FLOOR



OUTDOOR
Living

2ND FLOOR



9'↑ Ceiling

Higher Where Noted

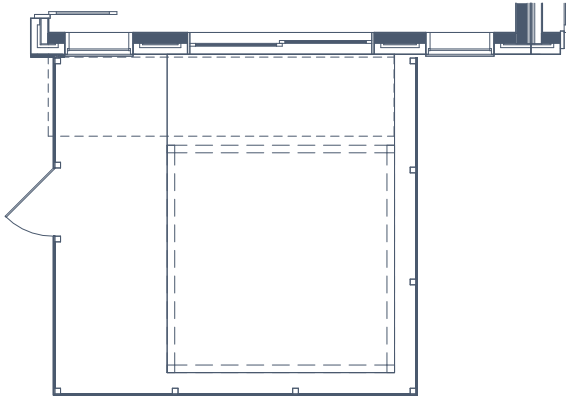


GRENADIER HOMES

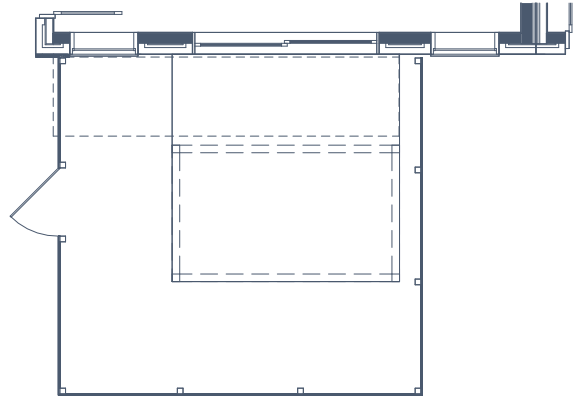
PLAN 2223

Floorplans are subject to change. There may be small differences between the plan shown and the final product purchased. We endeavor to continually improve our plans and processes, so please consult your sales counselor or the Grenadier Homes website for the most current version of this plan. Rev. 12/20

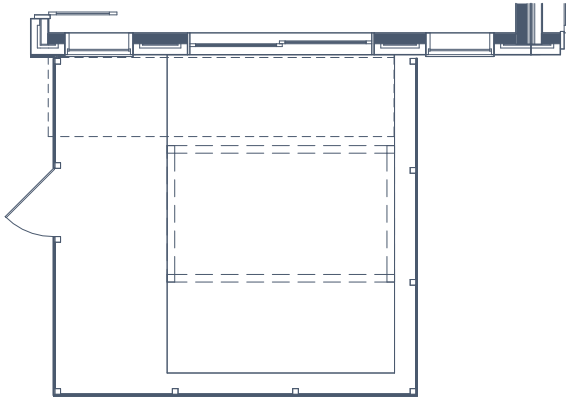




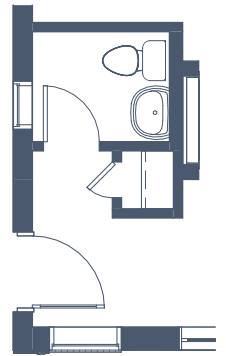
EXTENDED PATIO & EXTENDED TRELLIS



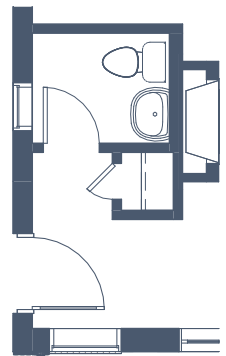
OPTIONAL TRELLIS



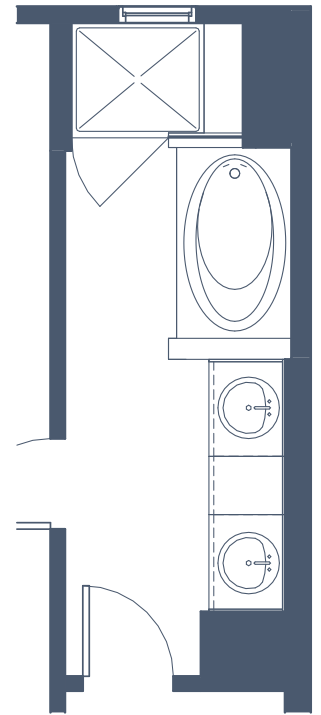
EXTENDED PATIO & OPTIONAL TRELLIS



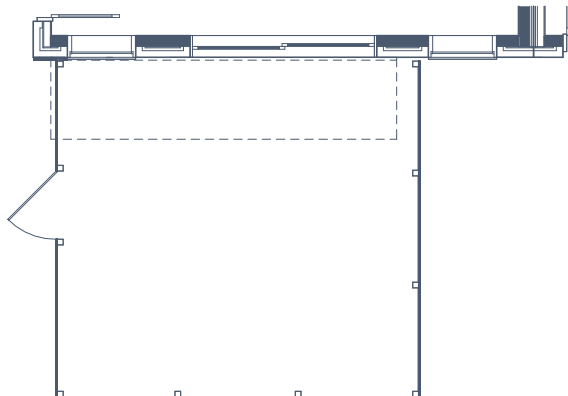
OPTIONAL ELECTRIC
FIREPLACE



OPTIONAL GAS
FIREPLACE



OPTIONAL PRIMARY BATH
GARDEN TUB



EXTENDED PATIO

