

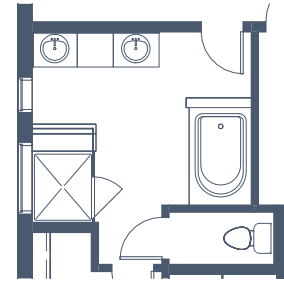
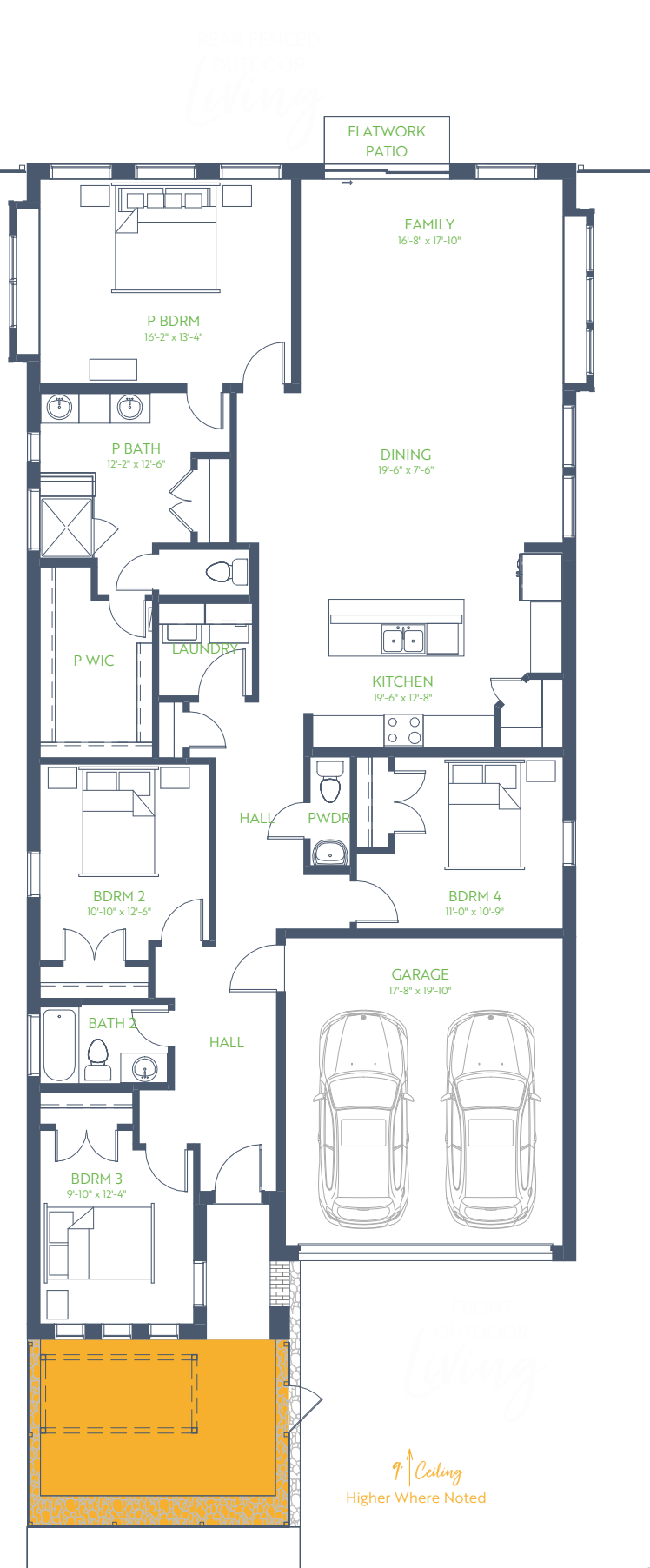
The Sequoia II

WILLOW GROVE SINGLE FAMILY

4 Bedroom • 2.5 Bath • Outdoor Living

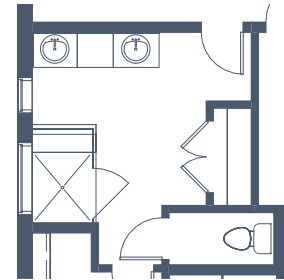
1 Story • 2106 sq. ft.

1ST FLOOR



OPT P BATH TUB

3/16" = 1'-0"



OPT P BATH NO-STEP SHWR

3/16" = 1'-0"

↑ Ceiling
Higher Where Noted



GRENADIER HOMES

Floorplans are subject to change. There may be small differences between the plan shown and the final product purchased. We endeavor to continually improve our plans and processes, so please consult your sales counselor or the Grenadier Homes website for the most current version of this plan.

PLAN 3503

DATE: 01/14/2025

