

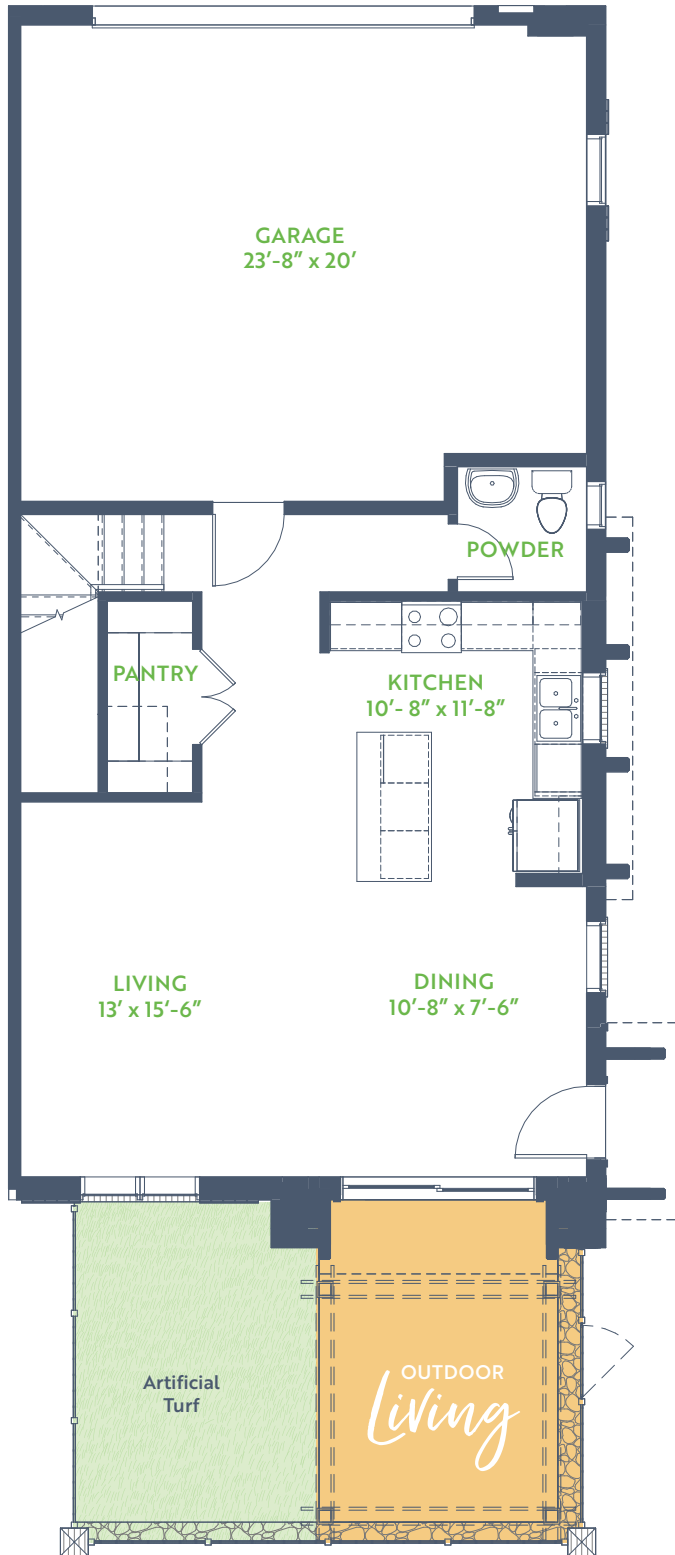
Turnberry

PLAN 2563
THE TRIBUTE TOWNHOMES

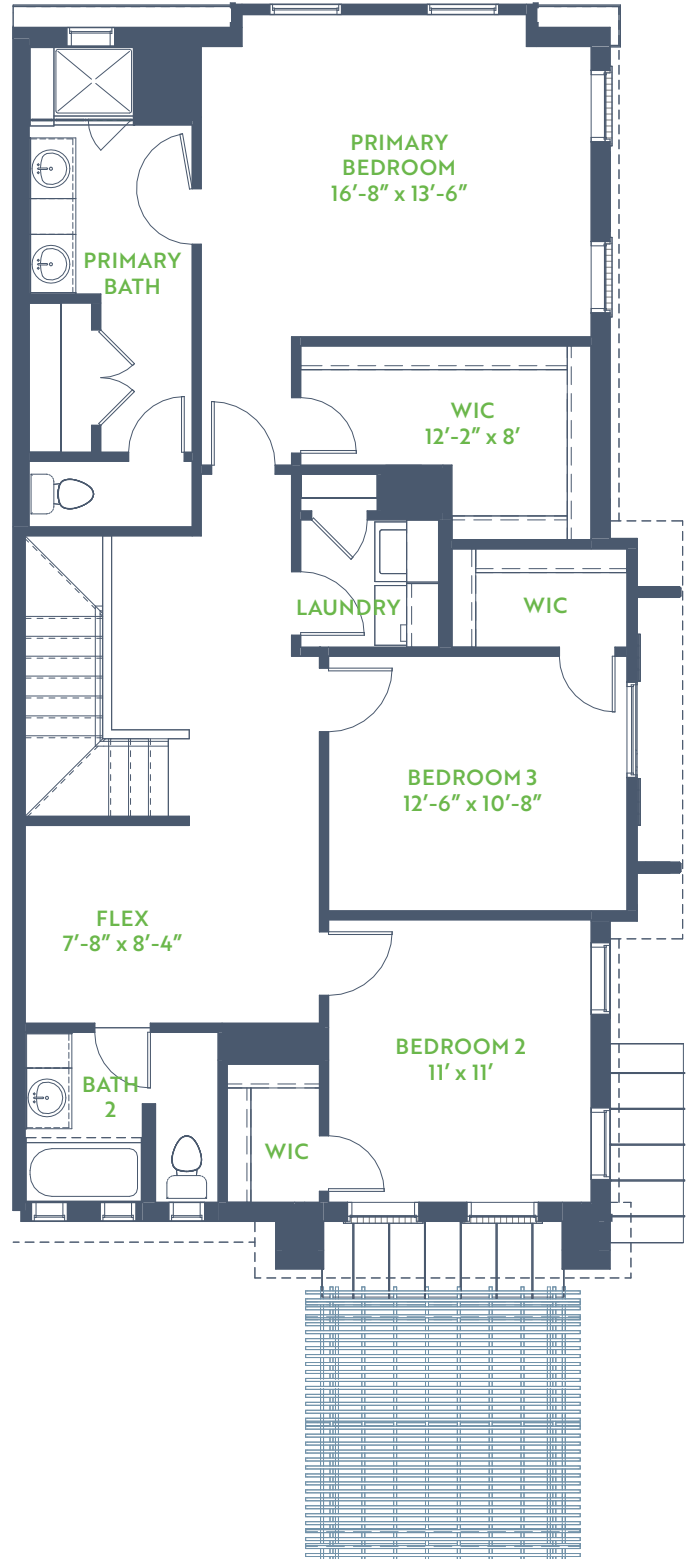
3 Bedroom • 2.5 Baths
Outdoor Living • Covered Balcony

2 Story • 1,987 SQ. FT.

1ST FLOOR *9'↑ Ceiling*



2ND FLOOR *9'↑ Ceiling*



GRENADIER HOMES

Floorplans are subject to change. There may be small differences between the plan shown and the final product purchased. We endeavor to continually improve our plans and processes, so please consult your sales counselor or the Grenadier Homes website for the most current version of this plan. Rev. 12/20

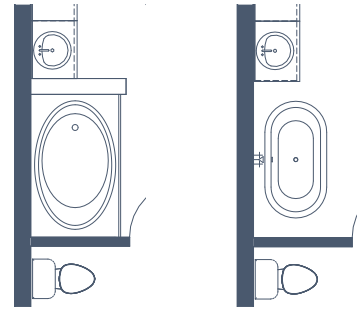
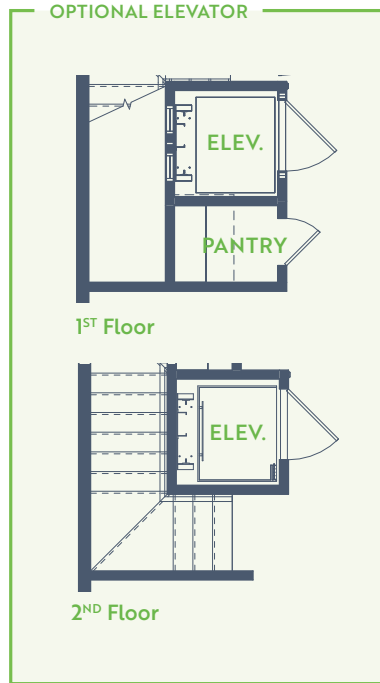


Turnberry

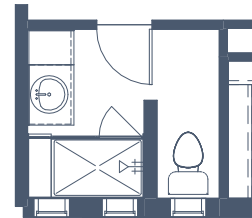
PLAN 2563
THE TRIBUTE TOWNHOMES

3 Bedroom • 2.5 Baths
Outdoor Living • Covered Balcony

2 Story • 1,987 SQ. FT.



OPTIONAL PRIMARY BATH TUB 1 OPTIONAL PRIMARY BATH TUB 2



OPTIONAL SHOWER BATH 2



OPTIONAL FIREPLACE 1



OPTIONAL FIREPLACE 2



OPTIONAL FIREPLACE 3



GRENADIER HOMES

Floorplans are subject to change. There may be small differences between the plan shown and the final product purchased. We endeavor to continually improve our plans and processes, so please consult your sales counselor or the Grenadier Homes website for the most current version of this plan. Rev. 12/20

