

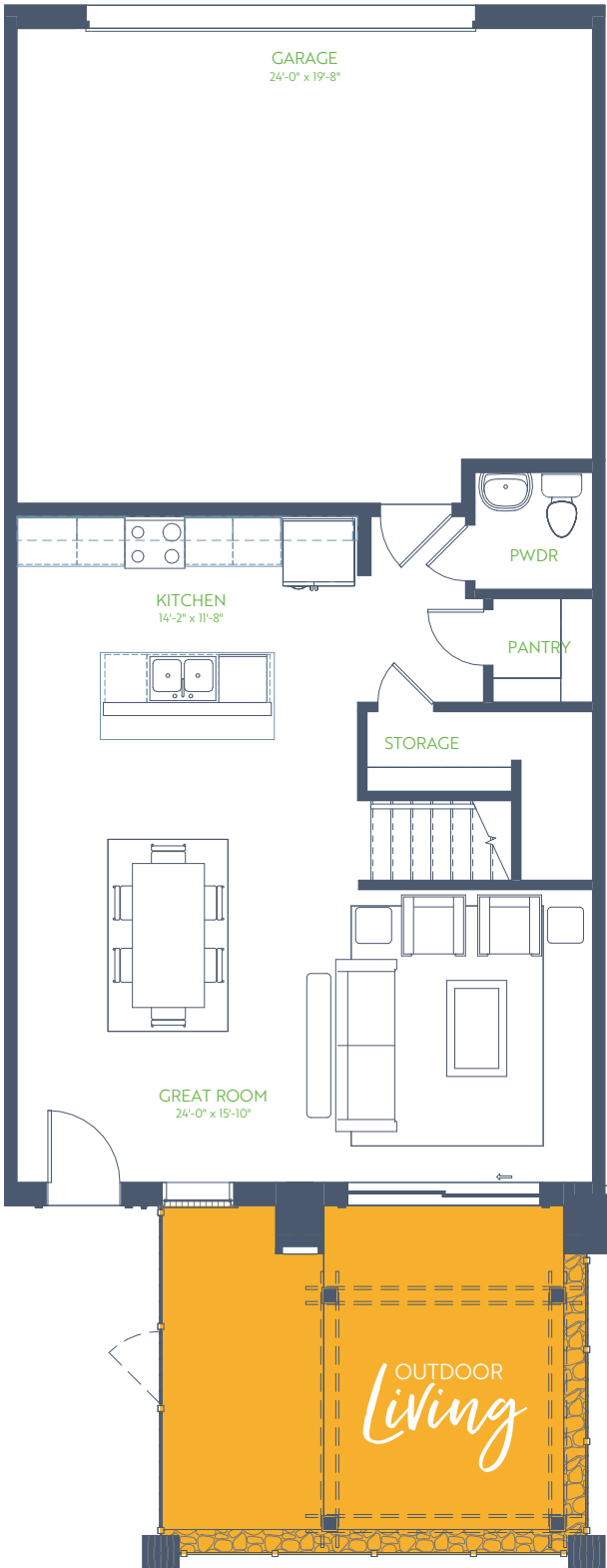
The Monterey

THE TRIBUTE TOWNHOMES

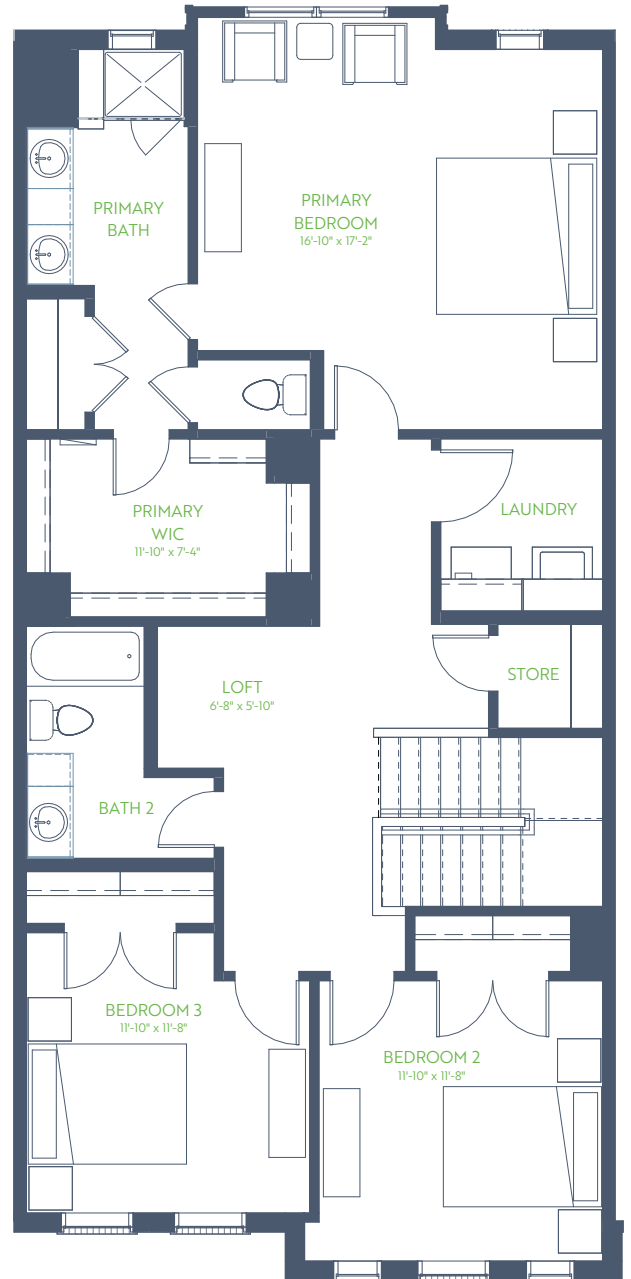
3 Bedroom • 2.5 Bath • Outdoor Living

2 Story • 2,004 sq. ft.

1ST FLOOR



2ND FLOOR



9' ↑ Ceiling
Higher Where Noted



GRENADIER HOMES

Floorplans are subject to change. There may be small differences between the plan shown and the final product purchased. We endeavor to continually improve our plans and processes, so please consult your sales counselor or the Grenadier Homes website for the most current version of this plan.

PLAN 2564

DATE: 04/08/2025

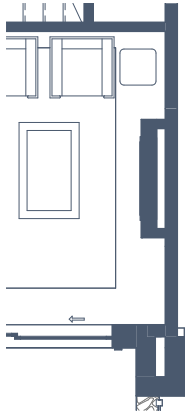


The Monterey

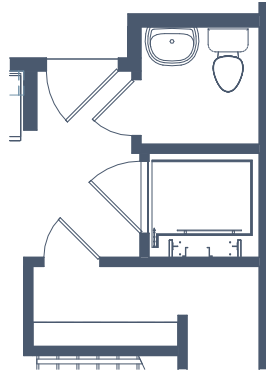
THE TRIBUTE TOWNHOMES

FLOORPLAN OPTIONS

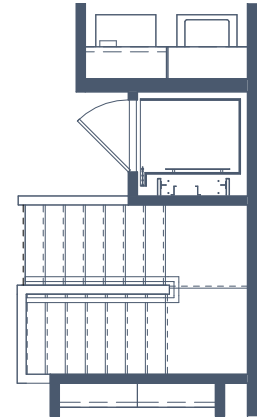
2 Story • 2,004 sq. ft.



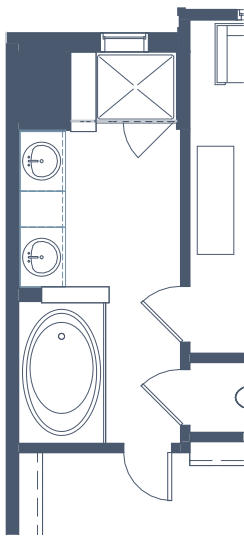
OPT ELEC FIREPLACE



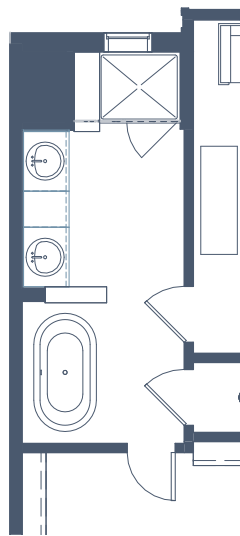
OPT FIRST FLOOR ELEVATOR



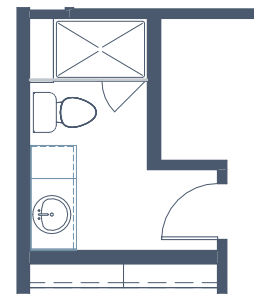
OPT SECOND FLOOR ELEVATOR



P BATH w/OPT GARDEN TUB



P BATH w/OPT SIENA TUB



OPT SHWR IN BATH 2



GRENADIER HOMES

Floorplans are subject to change. There may be small differences between the plan shown and the final product purchased. We endeavor to continually improve our plans and processes, so please consult your sales counselor or the Grenadier Homes website for the most current version of this plan.

PLAN 2564

DATE: 04/08/2025

