

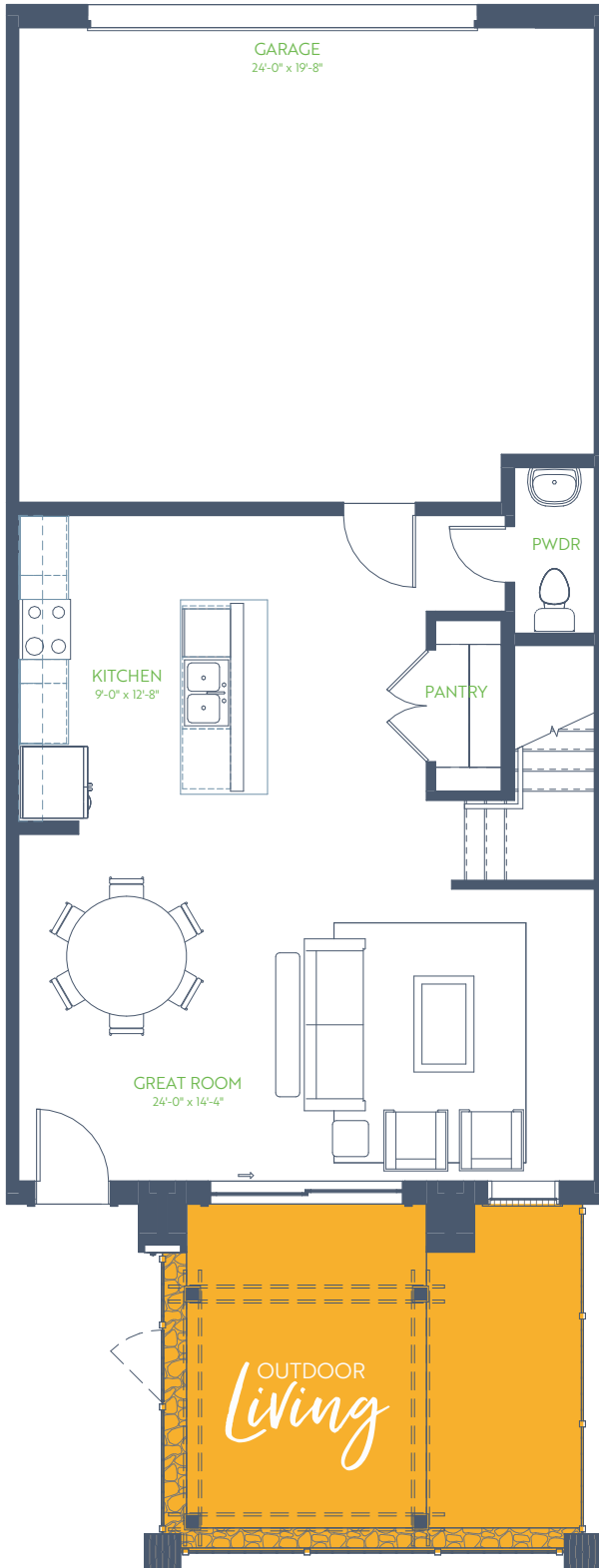
# The Muirfield

THE TRIBUTE TOWNHOMES

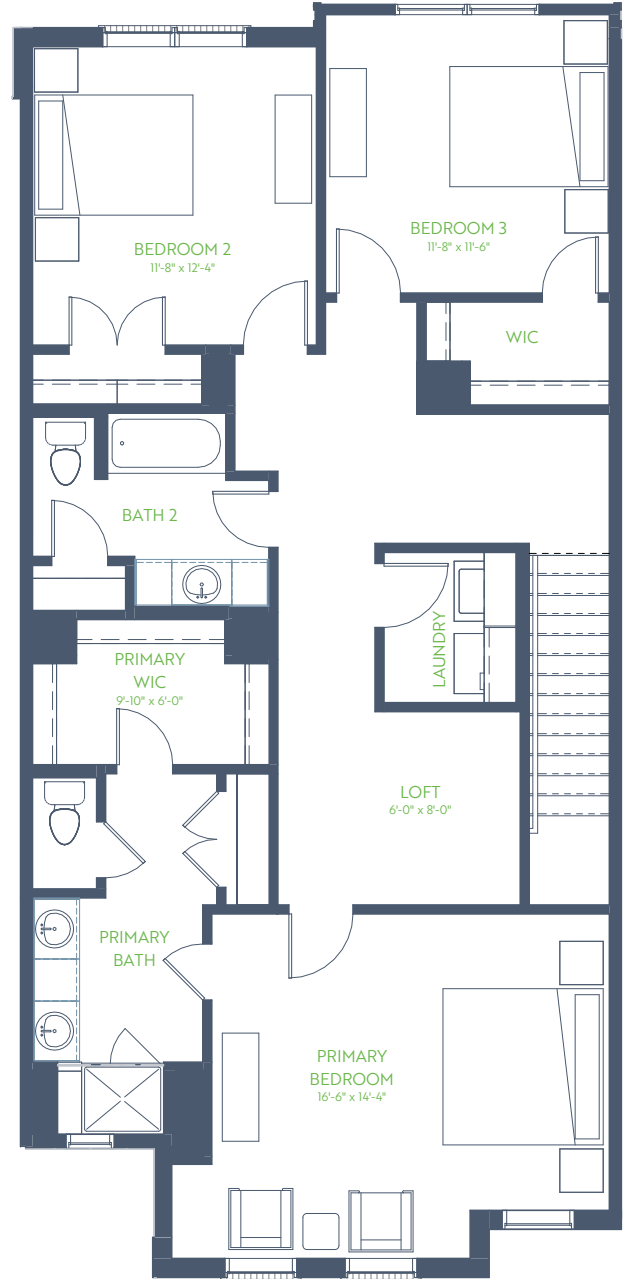
3 Bedroom • 2.5 Bath • Outdoor Living

2 Story • 1,976 sq. ft.

1ST FLOOR



2ND FLOOR



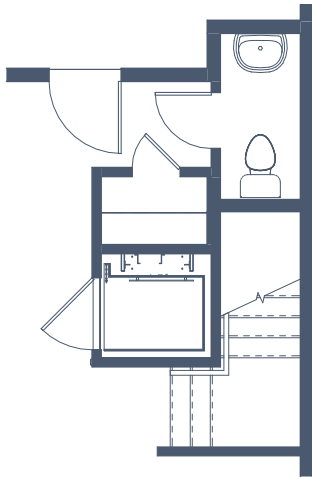
**GRENADIER HOMES**

Floorplans are subject to change. There may be small differences between the plan shown and the final product purchased. We endeavor to continually improve our plans and processes, so please consult your sales counselor or the Grenadier Homes website for the most current version of this plan.

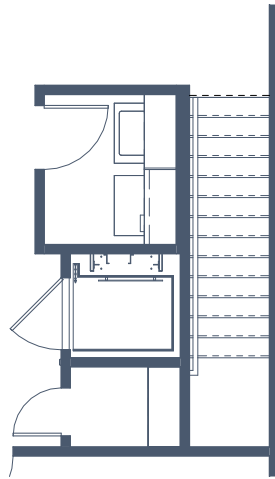
PLAN 2561

DATE: 04/18/2025

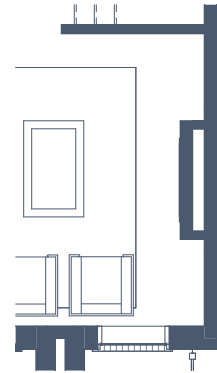




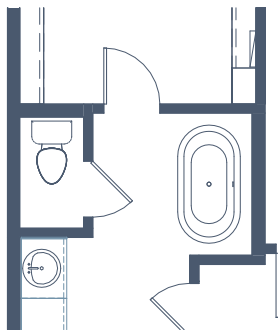
OPT FIRST FLOOR ELEVATOR



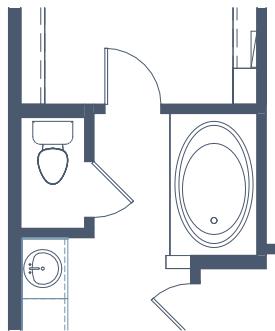
OPT SECOND FLOOR ELEVATOR



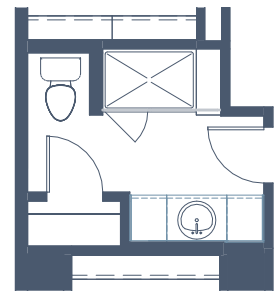
OPT ELEC FIREPLACE



OPT SIENA TUB IN P BATH



OPT GARDEN TUB IN P BATH



OPT SHWR IN BATH 2



**GRENADIER HOMES**

Floorplans are subject to change. There may be small differences between the plan shown and the final product purchased. We endeavor to continually improve our plans and processes, so please consult your sales counselor or the Grenadier Homes website for the most current version of this plan.

PLAN 2561

DATE: 04/18/2025

