

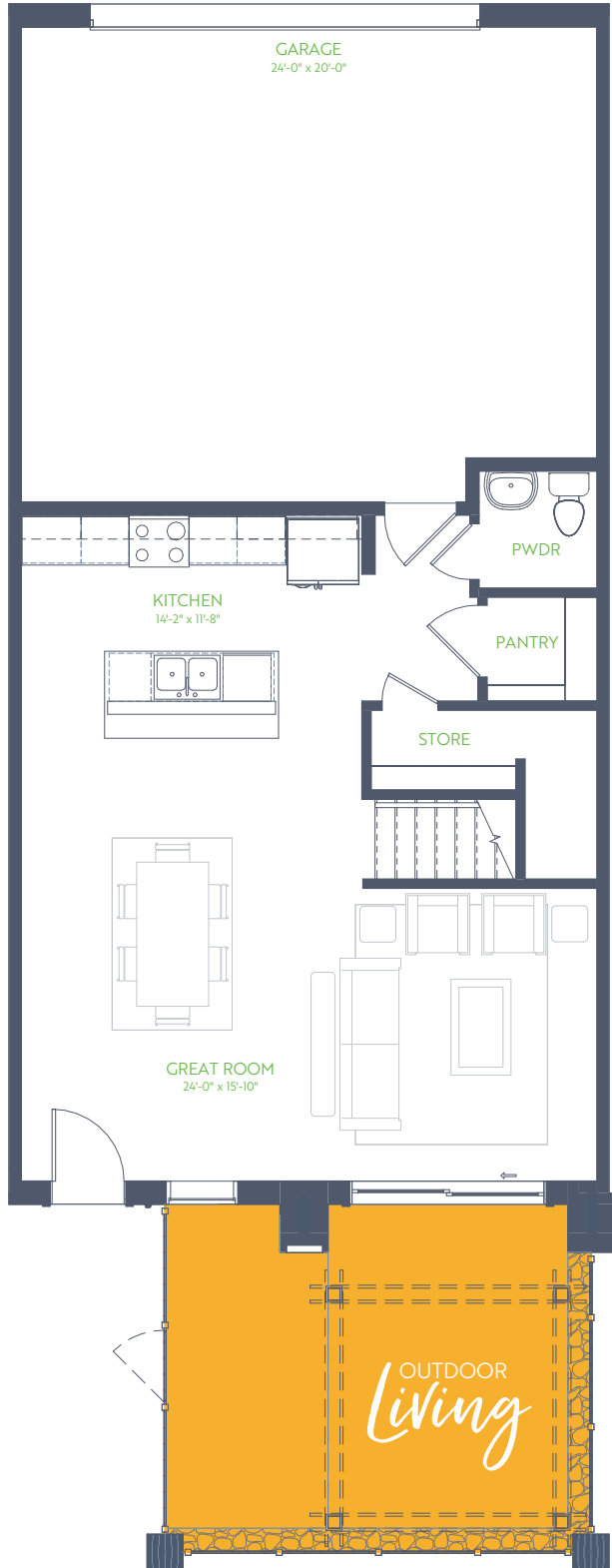
The Pikenwood

THE TRIBUTE TOWNHOMES

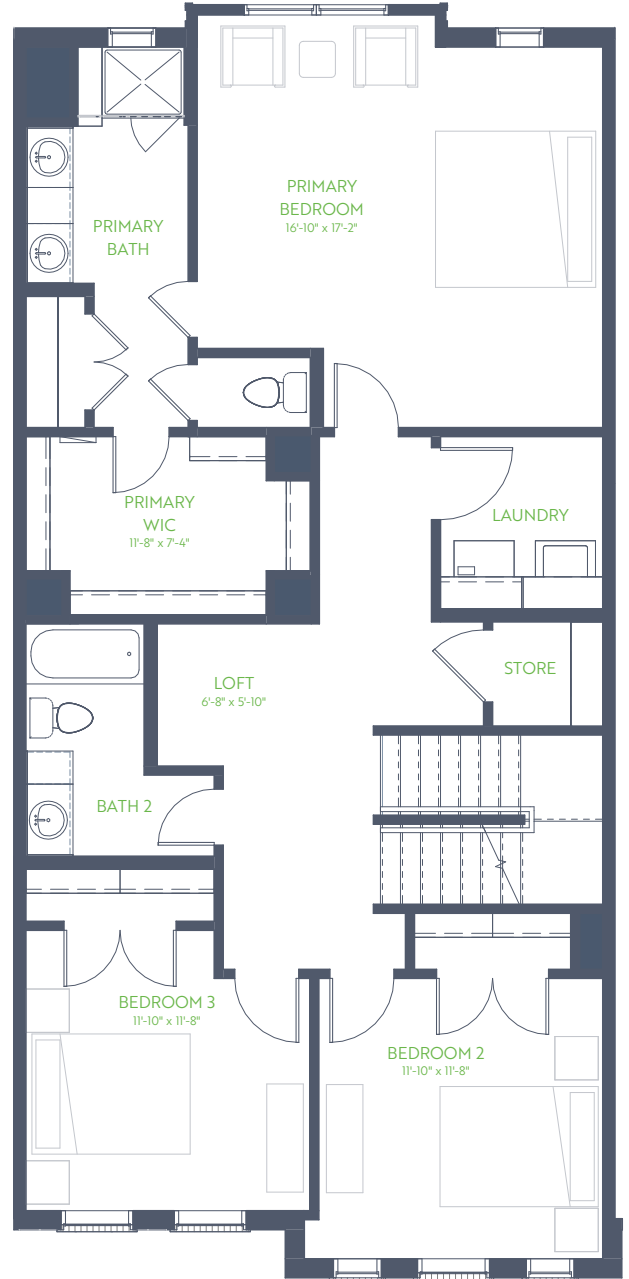
Up To 4 Bedroom • Up To 3.5 Baths
Outdoor Living • Covered Balcony

3 Story • Up To 2,606 sq. ft.

1ST FLOOR



2ND FLOOR



9' ↑ Ceiling
Higher Where Noted



GRENADIER HOMES

Floorplans are subject to change. There may be small differences between the plan shown and the final product purchased. We endeavor to continually improve our plans and processes, so please consult your sales counselor or the Grenadier Homes website for the most current version of this plan.

PLAN 2584

DATE: 04/21/2025



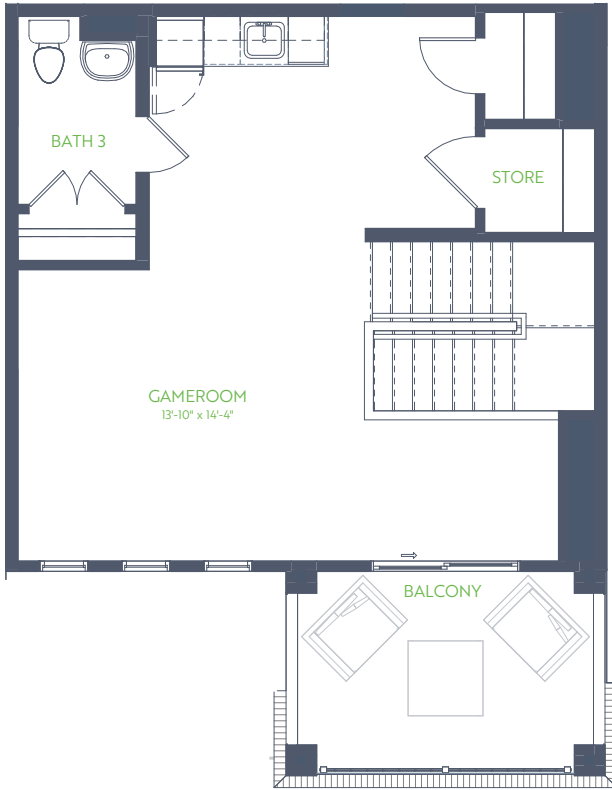
The Pikenwood

THE TRIBUTE TOWNHOMES

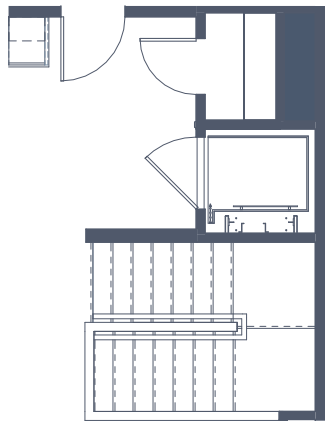
Up To 4 Bedroom • Up To 3.5 Baths
Outdoor Living • Covered Balcony

3 Story • Up To 2,606 sq. ft.

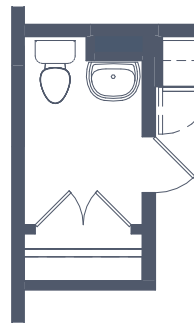
3RD FLOOR - GAMEROOM



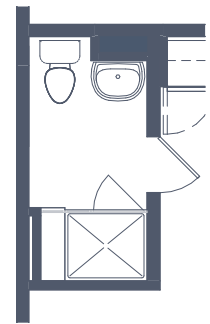
3RD FLOOR - OPT SUITE



OPT THIRD FLOOR ELEVATOR



OPT BATH 3 LINEN



OPT BATH 3 SHOWER



GRENADIER HOMES

Floorplans are subject to change. There may be small differences between the plan shown and the final product purchased. We endeavor to continually improve our plans and processes, so please consult your sales counselor or the Grenadier Homes website for the most current version of this plan.

PLAN 2584

DATE: 04/21/2025

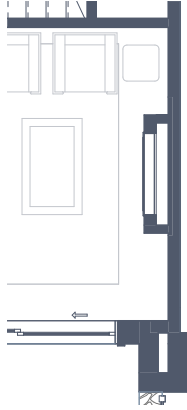


The Pikenwood

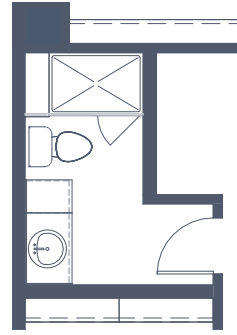
THE TRIBUTE TOWNHOMES

FLOORPLANS OPTIONS

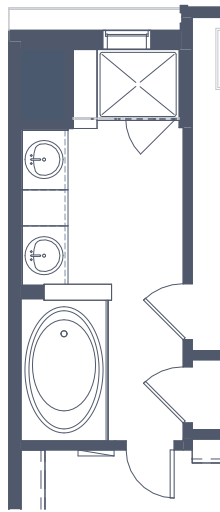
3 Story • Up To 2,606 sq. ft.



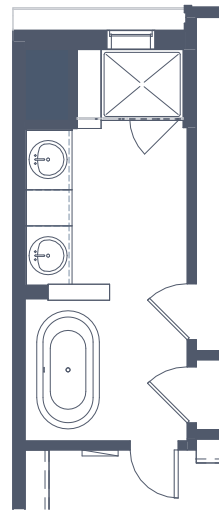
OPT ELEC FIREPLACE



OPT SHWR IN BATH 2



P BATH w/OPT GARDEN TUB



P BATH w/OPT SIENA TUB



GRENADIER HOMES

Floorplans are subject to change. There may be small differences between the plan shown and the final product purchased. We endeavor to continually improve our plans and processes, so please consult your sales counselor or the Grenadier Homes website for the most current version of this plan.

PLAN 2584

DATE: 04/21/2025

