

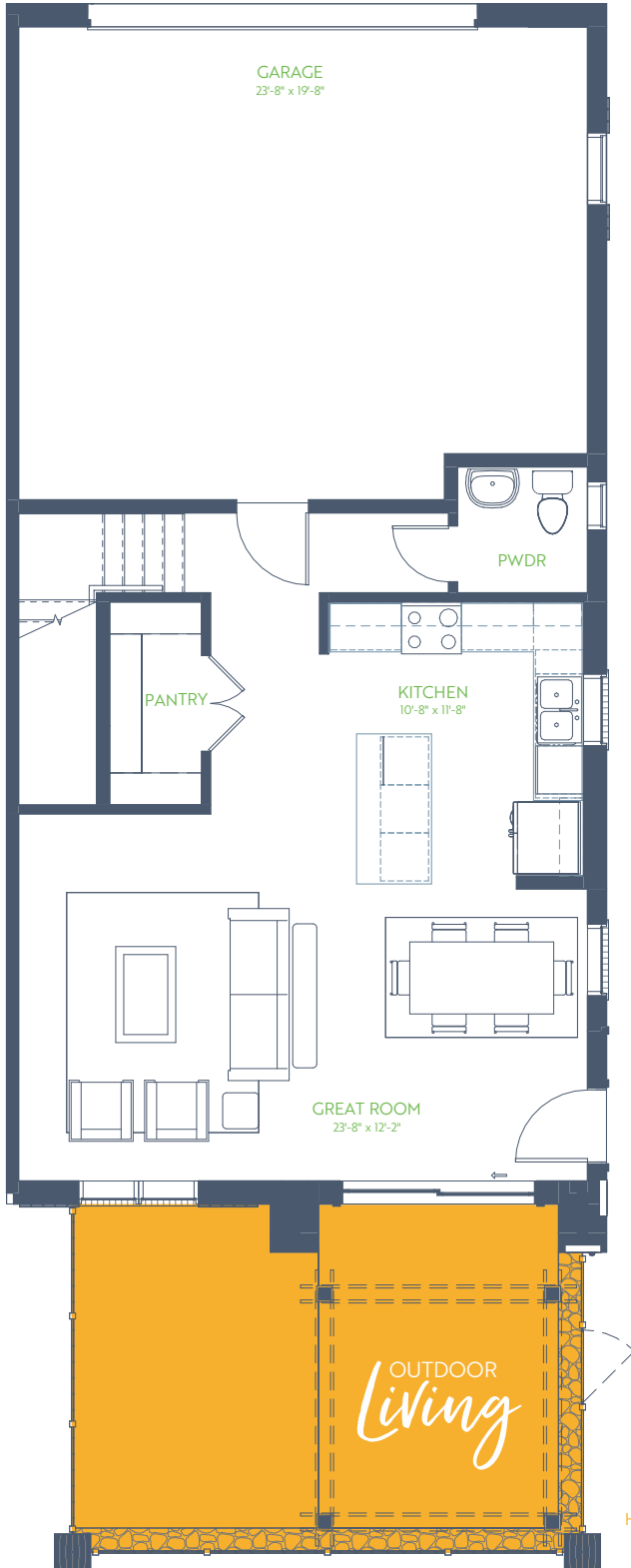
The Turnberry

THE TRIBUTE TOWNHOMES

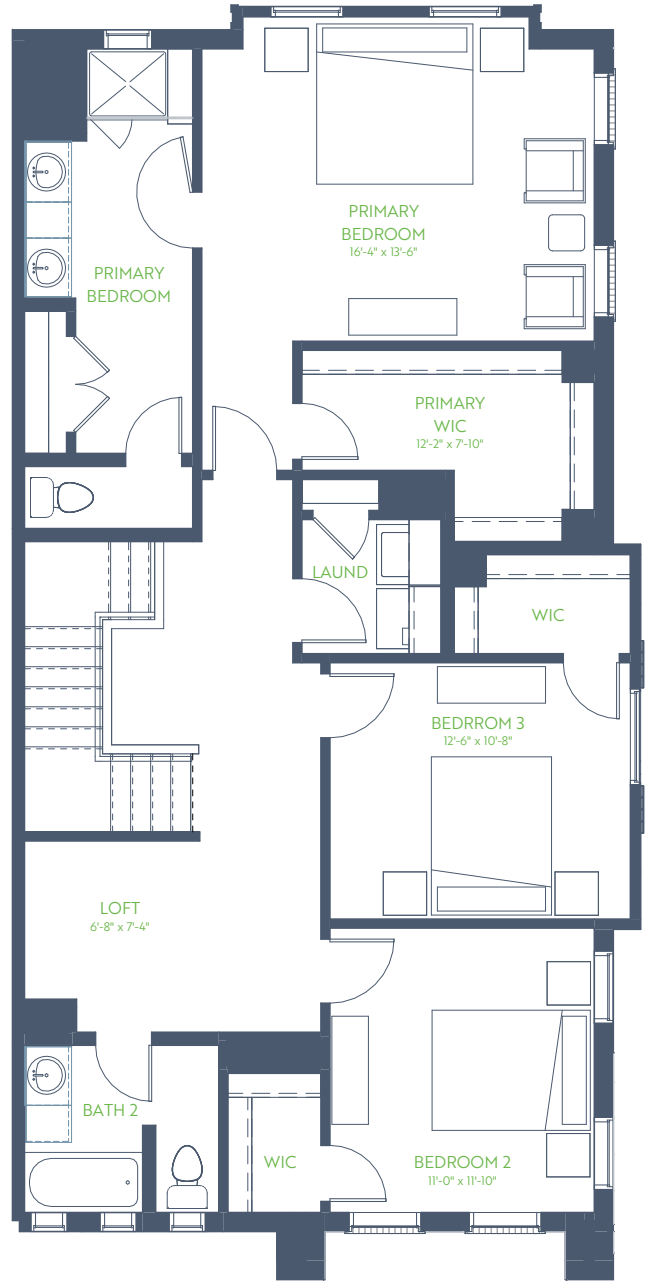
3 Bedroom • 2.5 Bath • Outdoor Living

2 Story • 1,987 sq. ft.

1ST FLOOR



2ND FLOOR



9' Ceiling
Higher Where Noted



GRENADIER HOMES

Floorplans are subject to change. There may be small differences between the plan shown and the final product purchased. We endeavor to continually improve our plans and processes, so please consult your sales counselor or the Grenadier Homes website for the most current version of this plan.

PLAN 2563

DATE: 04/08/2025



The Turnberry

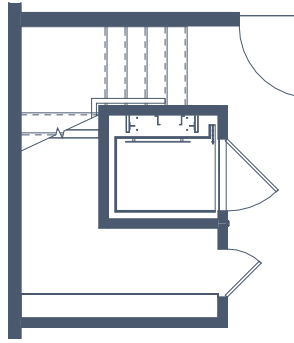
THE TRIBUTE TOWNHOMES

FLOORPLAN OPTIONS

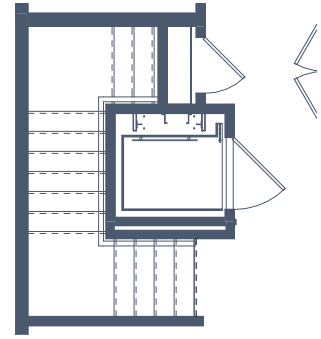
2 Story • 1,987 sq. ft.



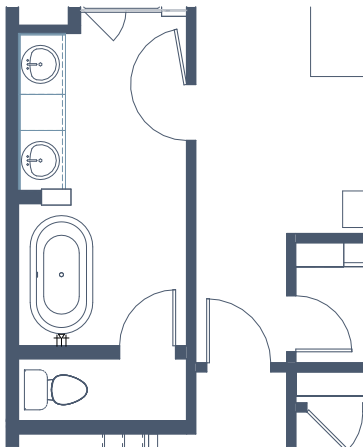
OPT ELEC FP



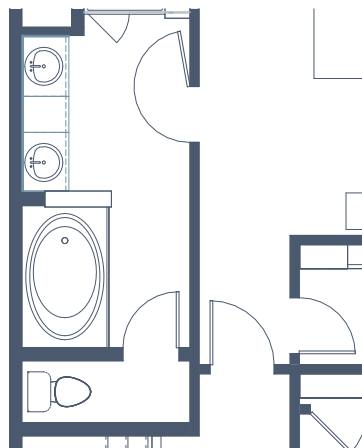
OPT FIRST FLOOR ELEVATOR



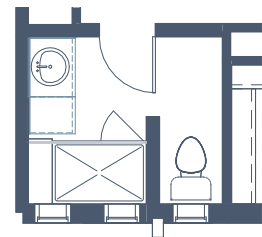
OPT SECOND FLOOR ELEVATOR



OPT 'SIENA' TUB



OPT GARDEN TUB



OPT SHWR IN BATH 2



GRENADIER HOMES

PLAN 2563

DATE: 04/08/2025

Floorplans are subject to change. There may be small differences between the plan shown and the final product purchased. We endeavor to continually improve our plans and processes, so please consult your sales counselor or the Grenadier Homes website for the most current version of this plan.

