

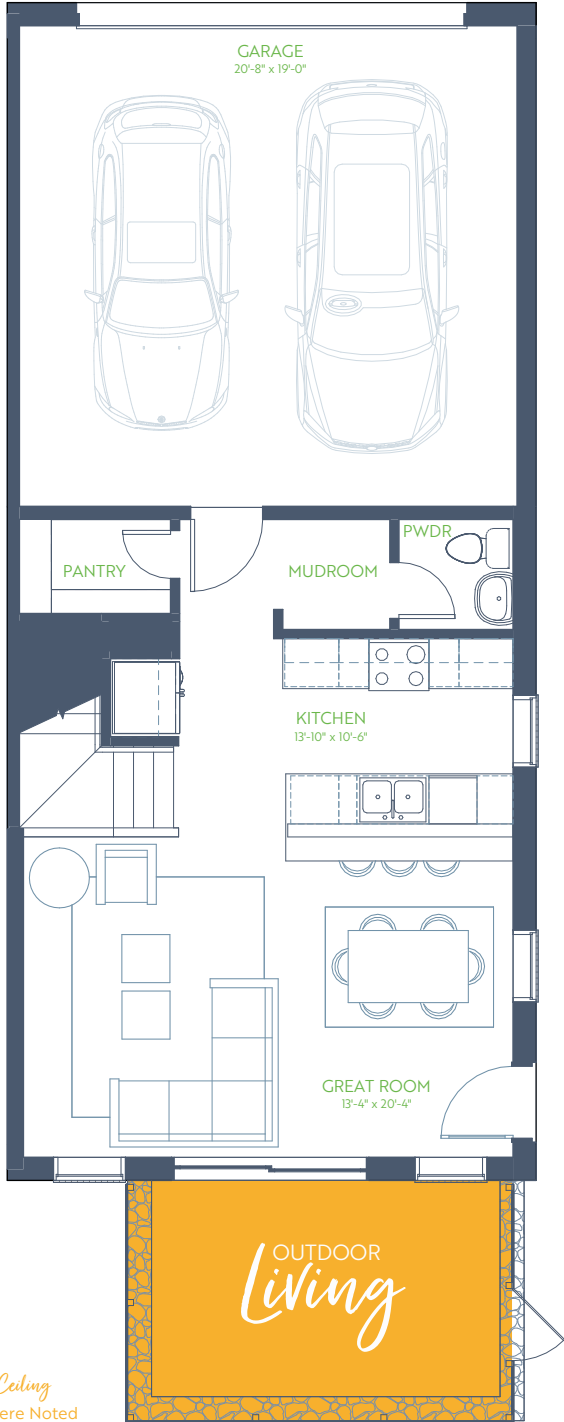
The Elm 11

WILLOW GROVE TOWNHOMES

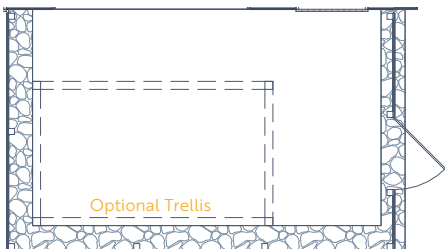
3 Bedroom • 2.5 Bath • Outdoor Living

2 Story • 1,698 SQ. FT.

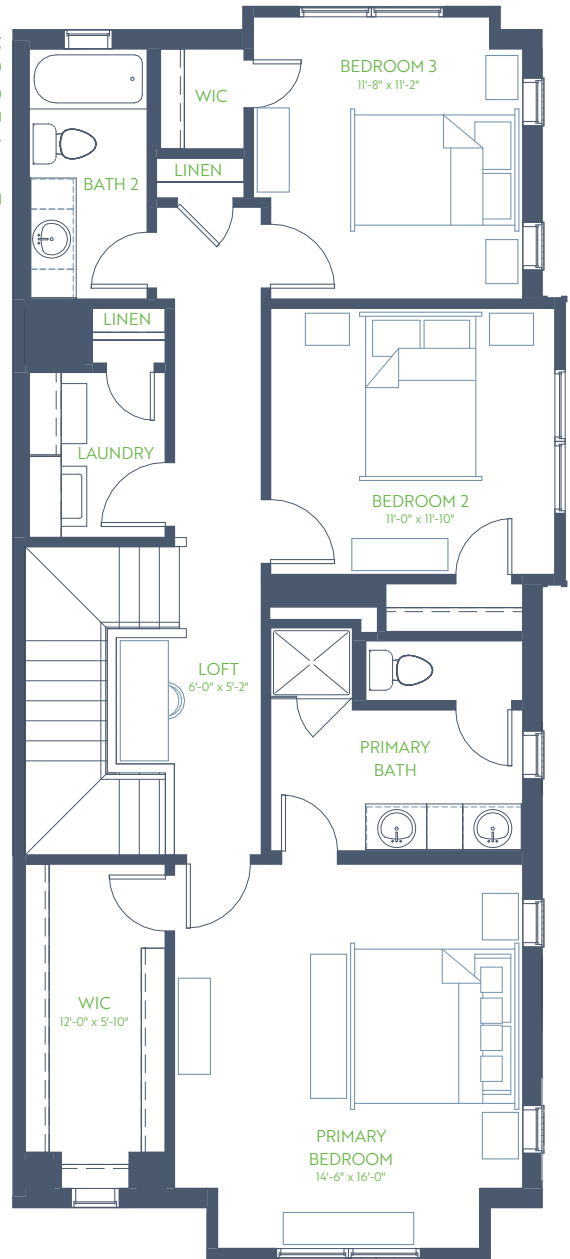
1ST FLOOR



9' Ceiling
Higher Where Noted



2ND FLOOR



GRENADIER HOMES

Floorplans are subject to change. There may be small differences between the plan shown and the final product purchased. We endeavor to continually improve our plans and processes, so please consult your sales counselor or the Grenadier Homes website for the most current version of this plan.

PLAN 2283

DATE: 01/09/2025

