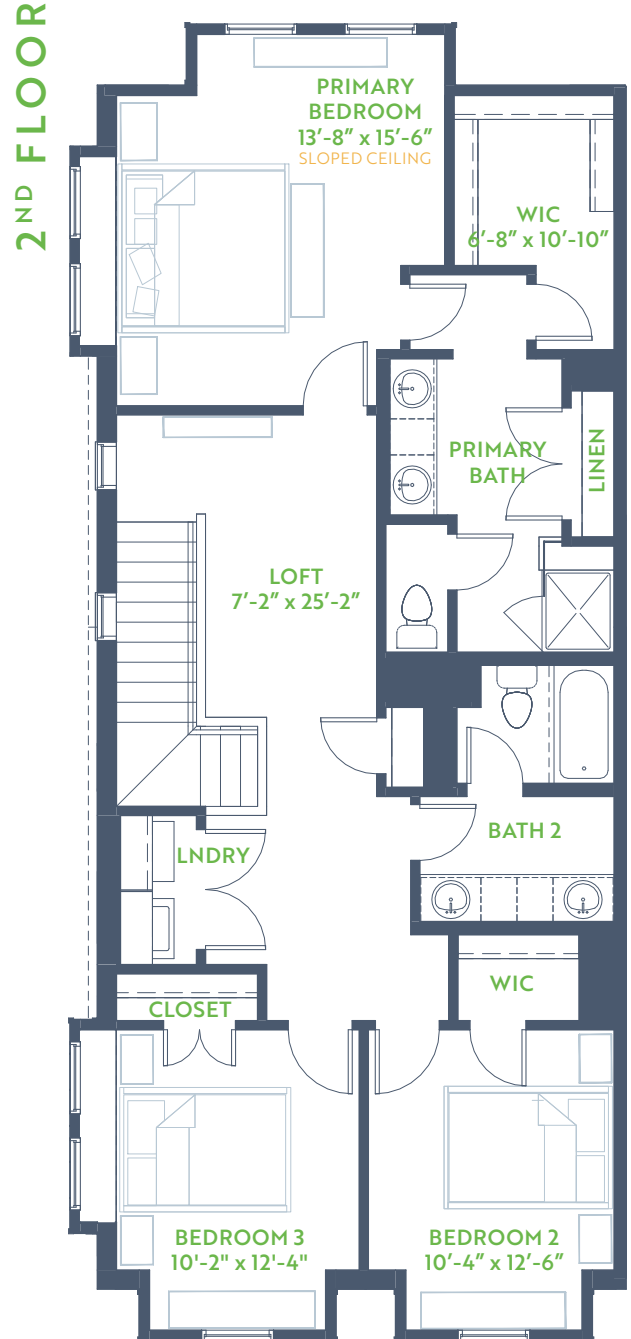
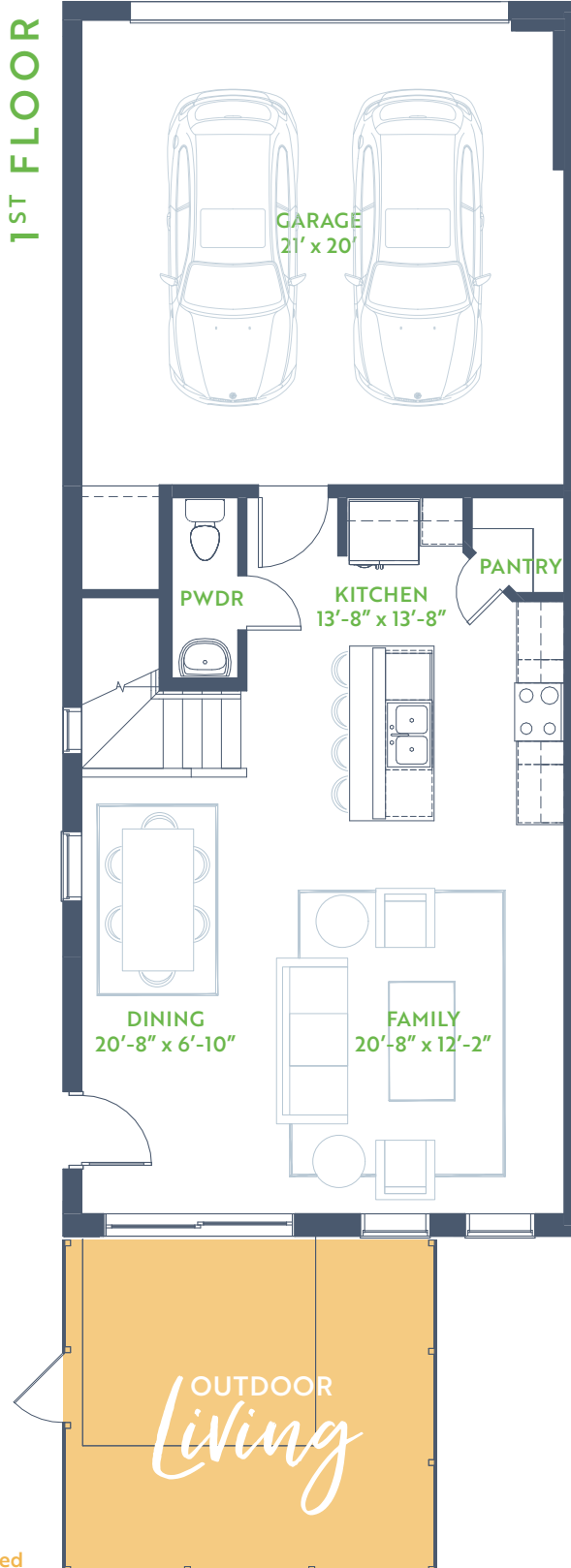


# The Cypress

WILLOW GROVE TOWNHOMES

3 Bedroom • 2.5 Bath  
Outdoor Living

2 Story • 1,825 SQ. FT.



9' ↑ Ceiling

Higher Where Noted



**GRENADIER HOMES**

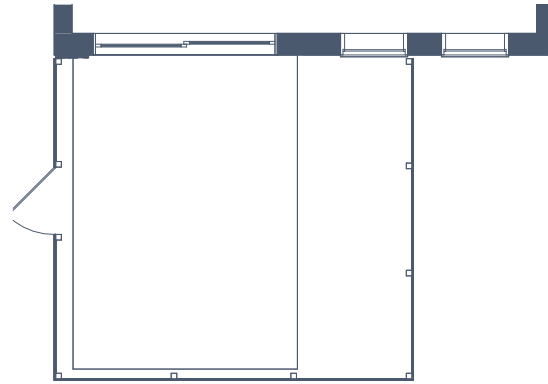
PLAN 2222

Floorplans are subject to change. There may be small differences between the plan shown and the final product purchased. We endeavor to continually improve our plans and processes, so please consult your sales counselor or the Grenadier Homes website for the most current version of this plan. Rev. 12/20

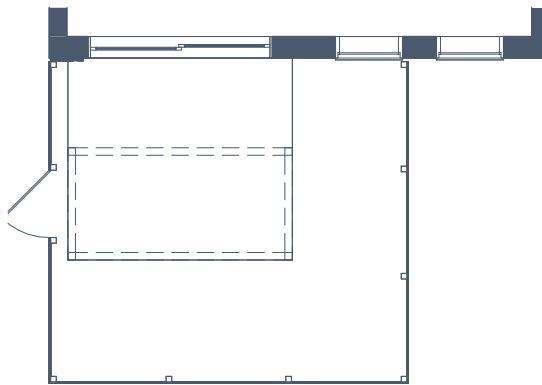




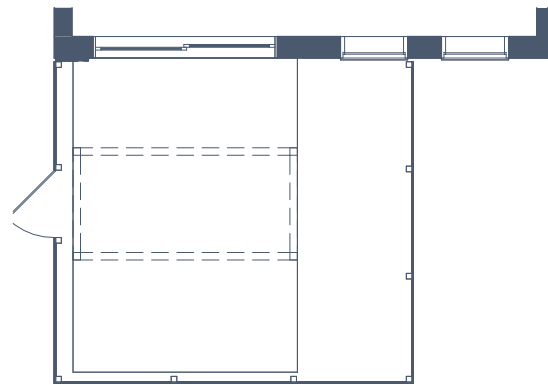
OPTIONAL FIREPLACE



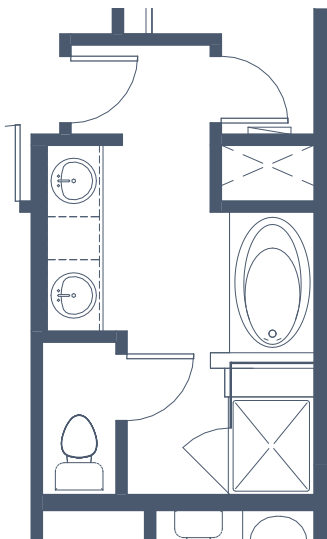
EXTENDED PATIO



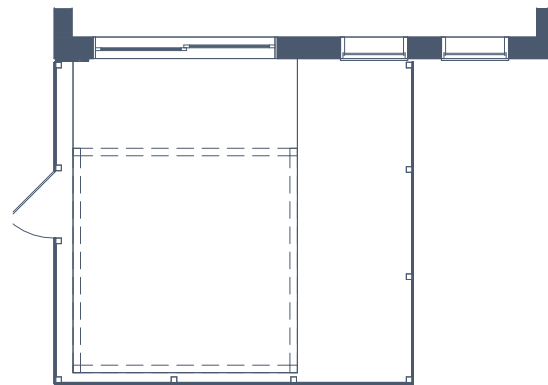
OPTIONAL TRELLIS



EXTENDED PATIO & OPTIONAL TRELLIS



OPTIONAL PRIMARY BATH  
GARDEN TUB



EXTENDED PATIO & EXTENDED TRELLIS



**GRENADIER HOMES**

PLAN 2222

Floorplans are subject to change. There may be small differences between the plan shown and the final product purchased. We endeavor to continually improve our plans and processes, so please consult your sales counselor or the Grenadier Homes website for the most current version of this plan. Rev. 12/20

