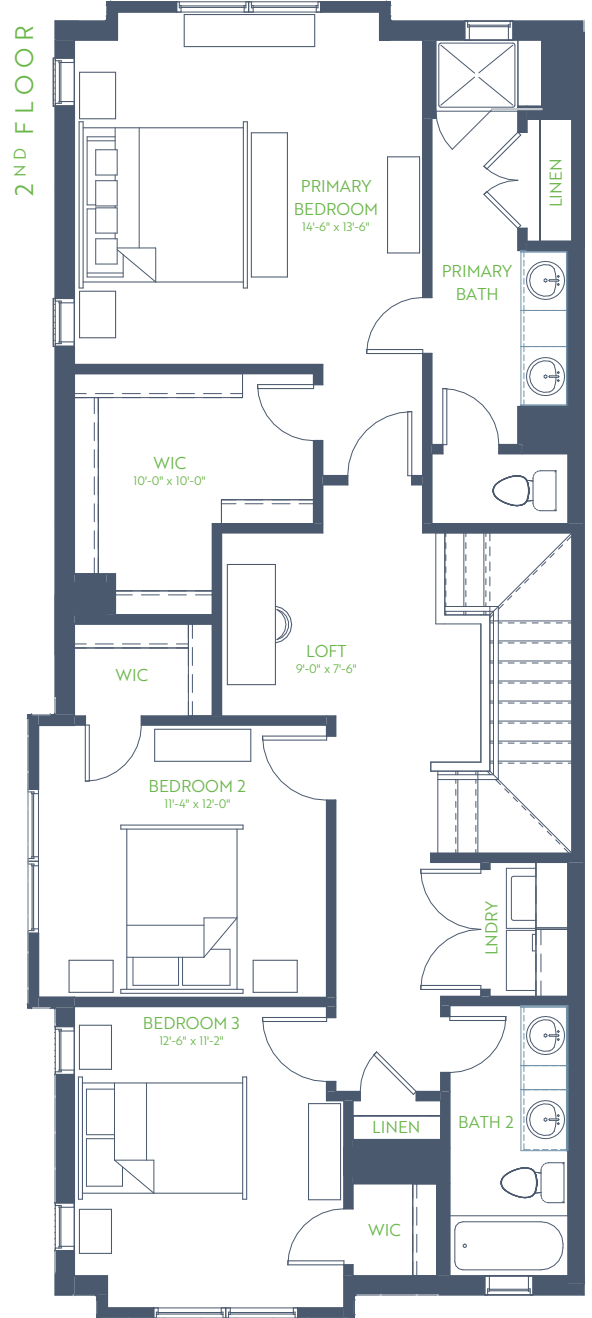
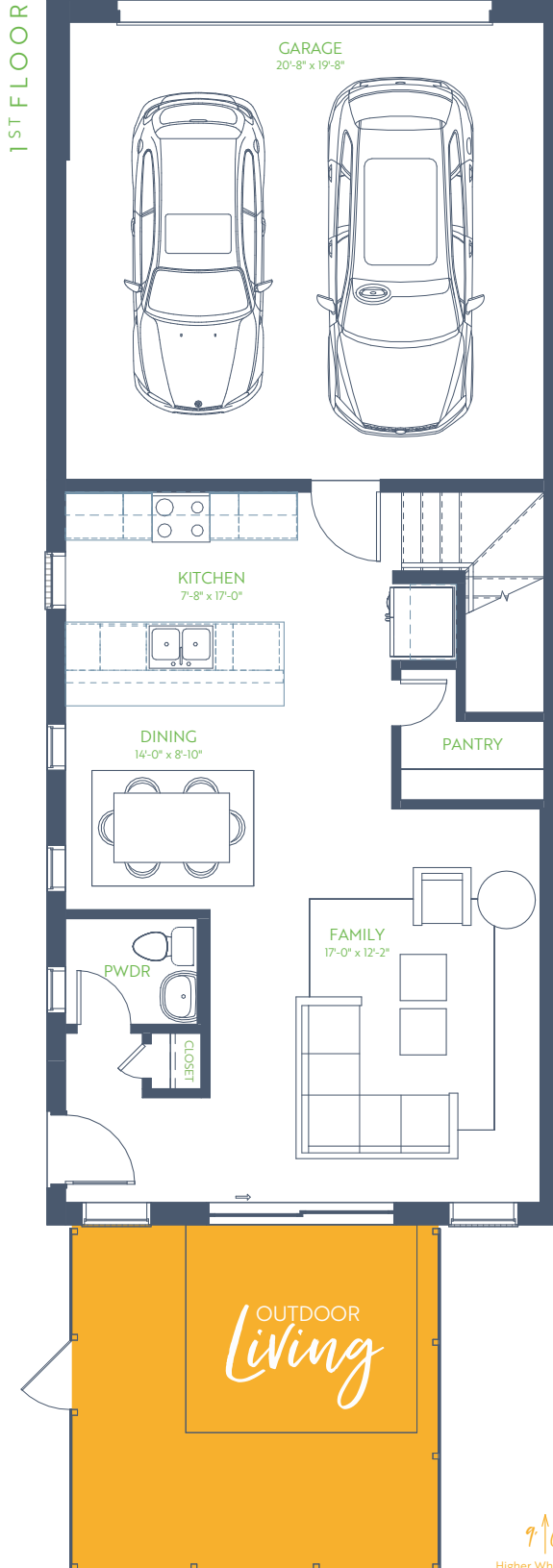


Catalpa

TEN MILE CREEK TOWNHOMES

3 Bedroom • 2.5 Bath • Outdoor Living

2 Story • 1,867 sq. ft.



↑ Ceiling
Higher Where Noted



GRENADIER HOMES

Floorplans are subject to change. There may be small differences between the plan shown and the final product purchased. We endeavor to continually improve our plans and processes, so please consult your sales counselor or the Grenadier Homes website for the most current version of this plan.

PLAN 2263

DATE: 01/22/2025

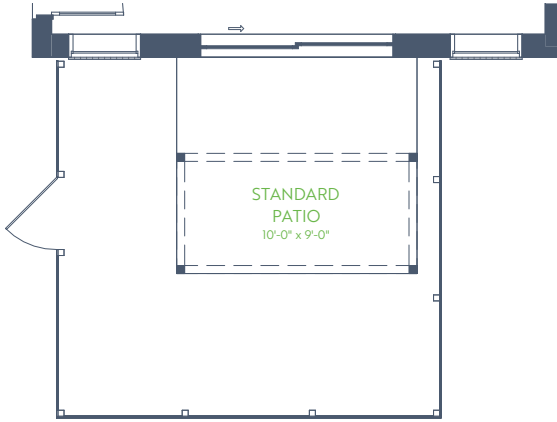


Catalpa

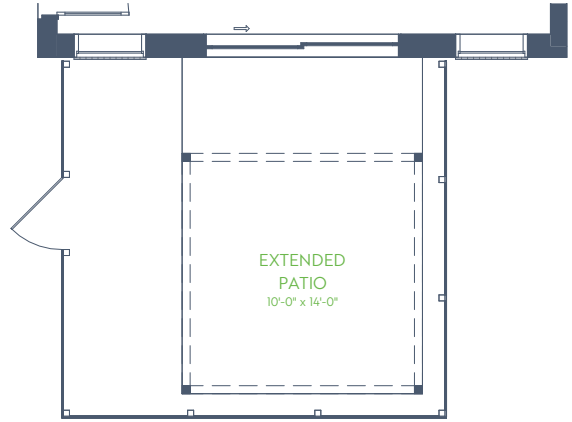
TEN MILE CREEK TOWNHOMES

Options

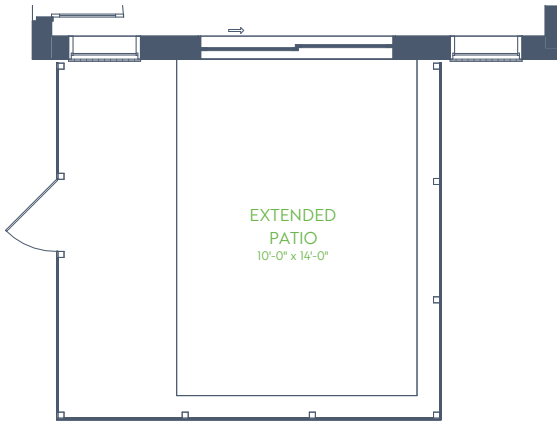
2 Story • 1,867 sq. ft.



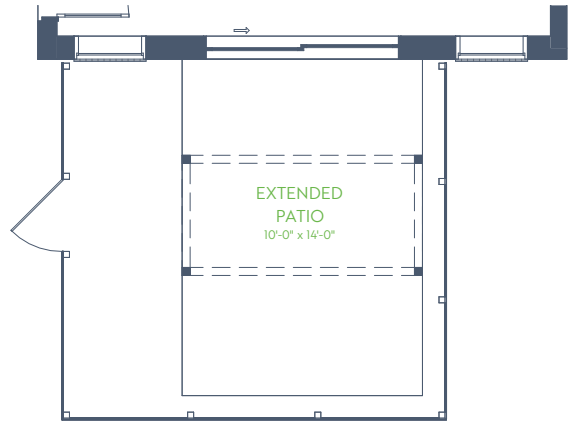
OPTIONAL TRELLIS



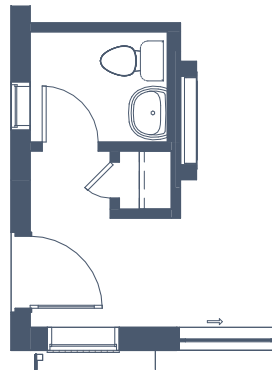
OPTIONAL EXTENDED PATIO + OPTIONAL EXTENDED TRELLIS



OPTIONAL EXTENDED PATIO



OPTIONAL EXTENDED PATIO + OPTIONAL TRELLIS



OPT ELECTRICAL FIREPLACE



GRENADIER HOMES

Floorplans are subject to change. There may be small differences between the plan shown and the final product purchased. We endeavor to continually improve our plans and processes, so please consult your sales counselor or the Grenadier Homes website for the most current version of this plan.

PLAN 2263

DATE: 01/22/2025

