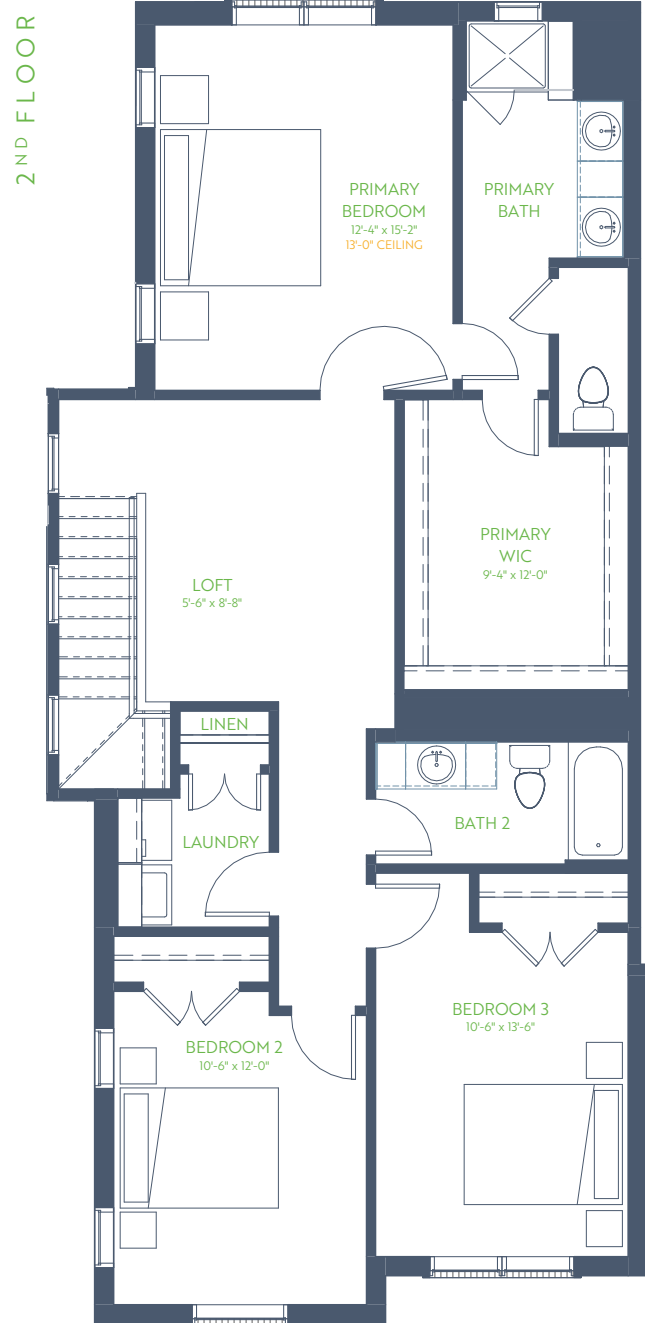
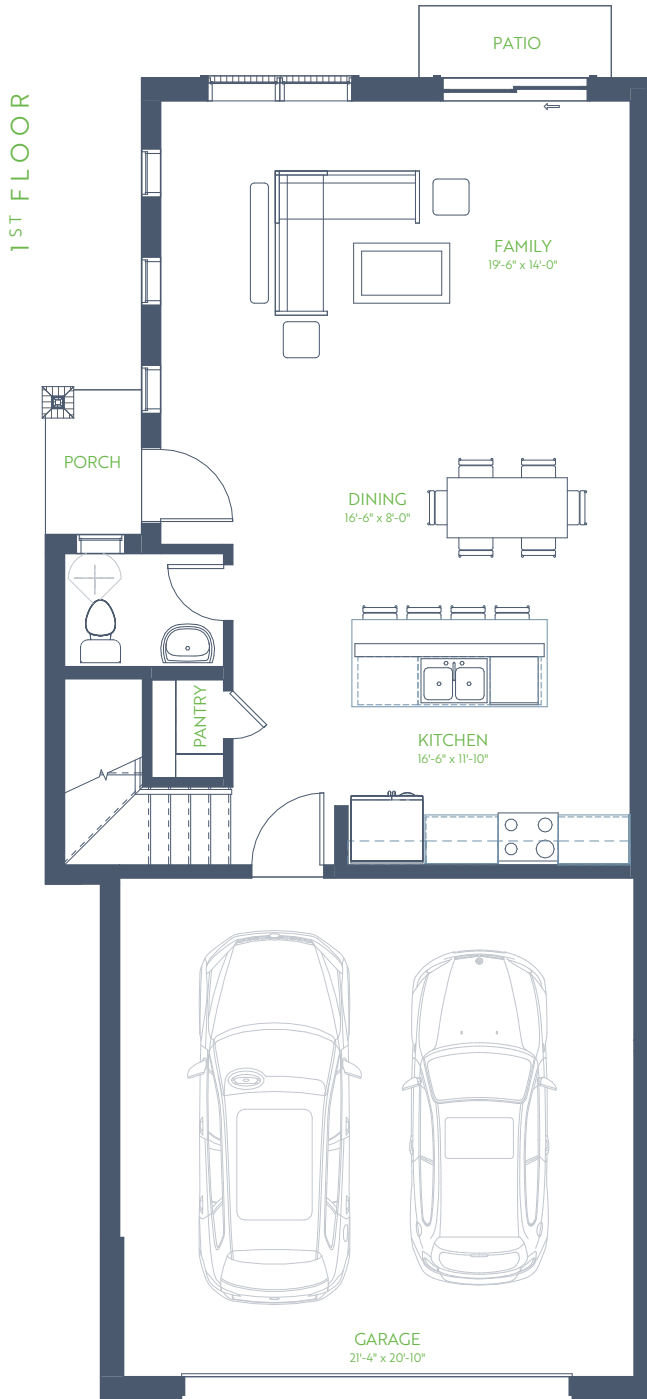


The Blaze

WILDRIDGE TOWNHOMES

3 Bedroom • 2.5 Bath • Outdoor Living

2 Story • 1,960 sq. ft.



9' Ceiling
Higher Where Noted



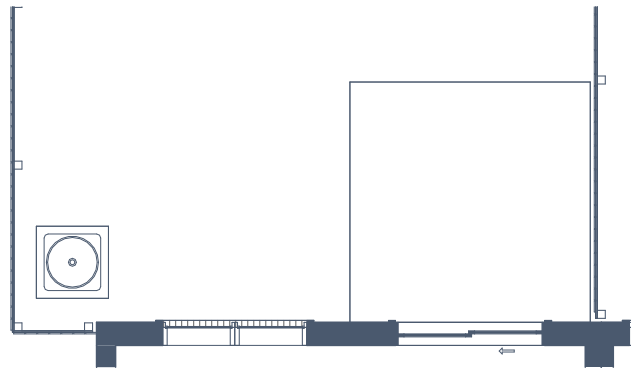
GRENADIER HOMES

PLAN 2543

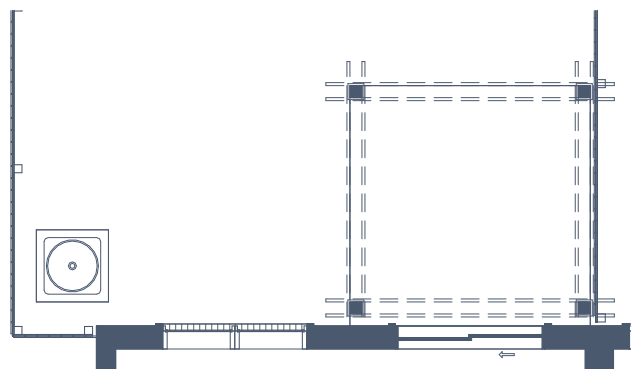
DATE: 06/27/2025

Floorplans are subject to change. There may be small differences between the plan shown and the final product purchased. We endeavor to continually improve our plans and processes, so please consult your sales counselor or the Grenadier Homes website for the most current version of this plan.





OPTIONAL EXTENDED PATIO



OPTIONAL EXTENDED PATIO + OPTIONAL
TRELLIS



OPTIONAL ELECTRIC FIREPLACE



GRENADIER HOMES

PLAN 2543

Floorplans are subject to change. There may be small differences between the plan shown and the final product purchased. We endeavor to continually improve our plans and processes, so please consult your sales counselor or the Grenadier Homes website for the most current version of this plan.

DATE: 06/27/2025

