

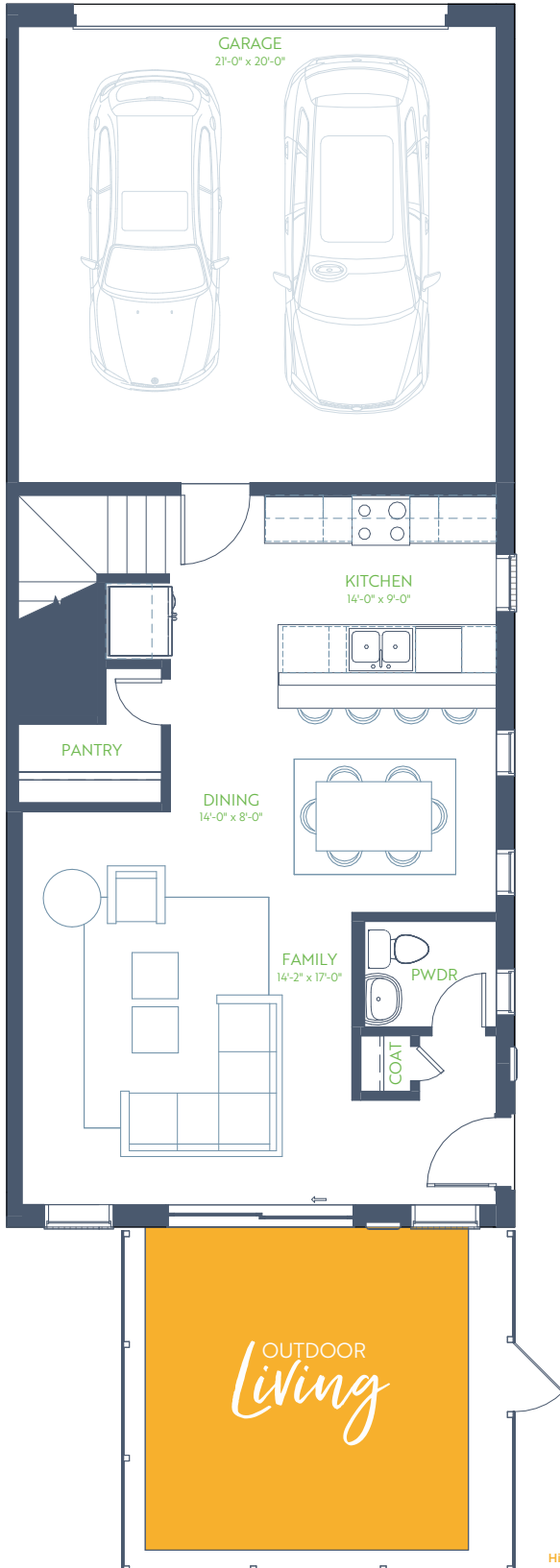
The Elm

WILDRIDGE TOWNHOMES

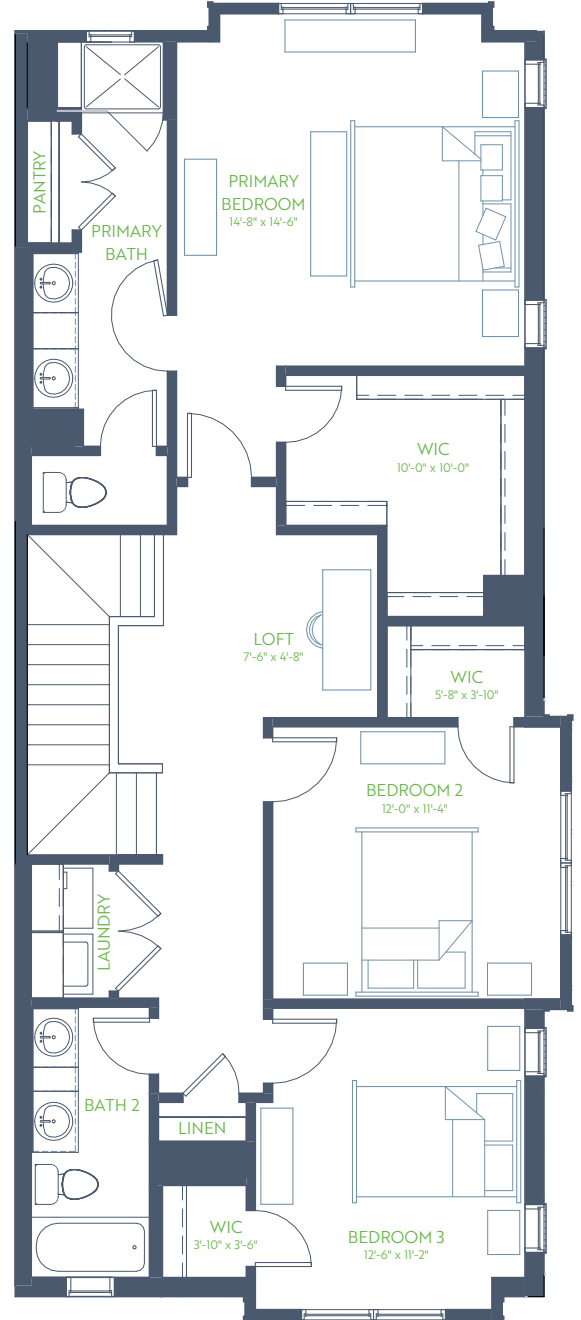
3 Bedroom • 2.5 Bath • Outdoor Living

2 Story • 1,863 sq. ft.

1ST FLOOR



2ND FLOOR



9' Ceiling
Higher Where Noted



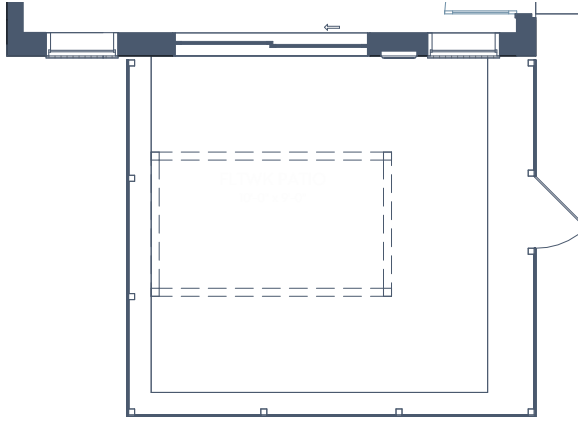
GRENADIER HOMES

PLAN 2223-G

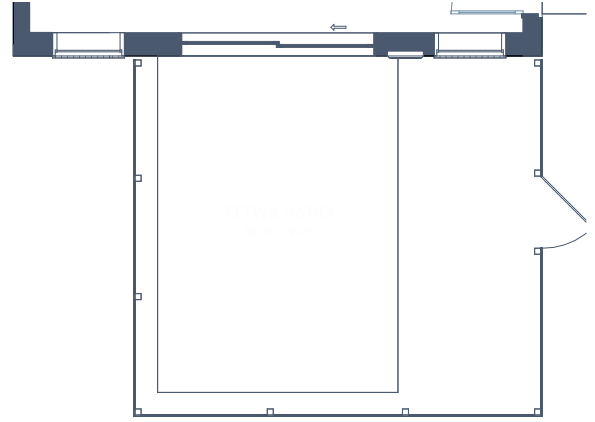
Floorplans are subject to change. There may be small differences between the plan shown and the final product purchased. We endeavor to continually improve our plans and processes, so please consult your sales counselor or the Grenadier Homes website for the most current version of this plan.

DATE: 06/27/2025

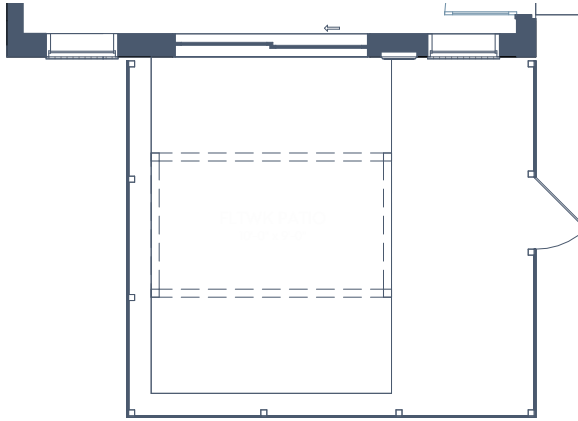




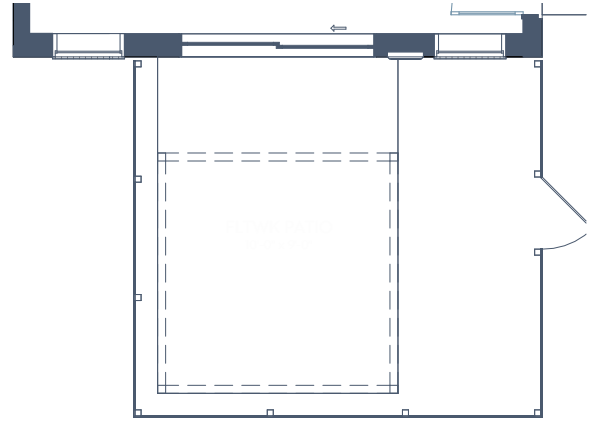
OPTIONAL TRELLIS



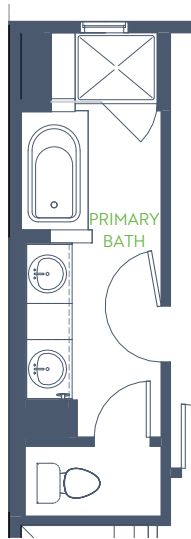
OPTIONAL TURF



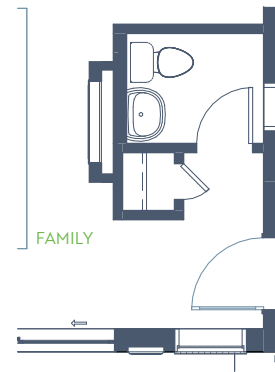
OPTIONAL TURF & OPTIONAL TRELLIS



OPTIONAL TURF & OPTIONAL EXTENDED TRELLIS



OPT GARDEN TUB



OPT ELECTRICAL FIREPLACE



GRENADIER HOMES

PLAN 2223-G

Floorplans are subject to change. There may be small differences between the plan shown and the final product purchased. We endeavor to continually improve our plans and processes, so please consult your sales counselor or the Grenadier Homes website for the most current version of this plan.

DATE: 06/27/2025

