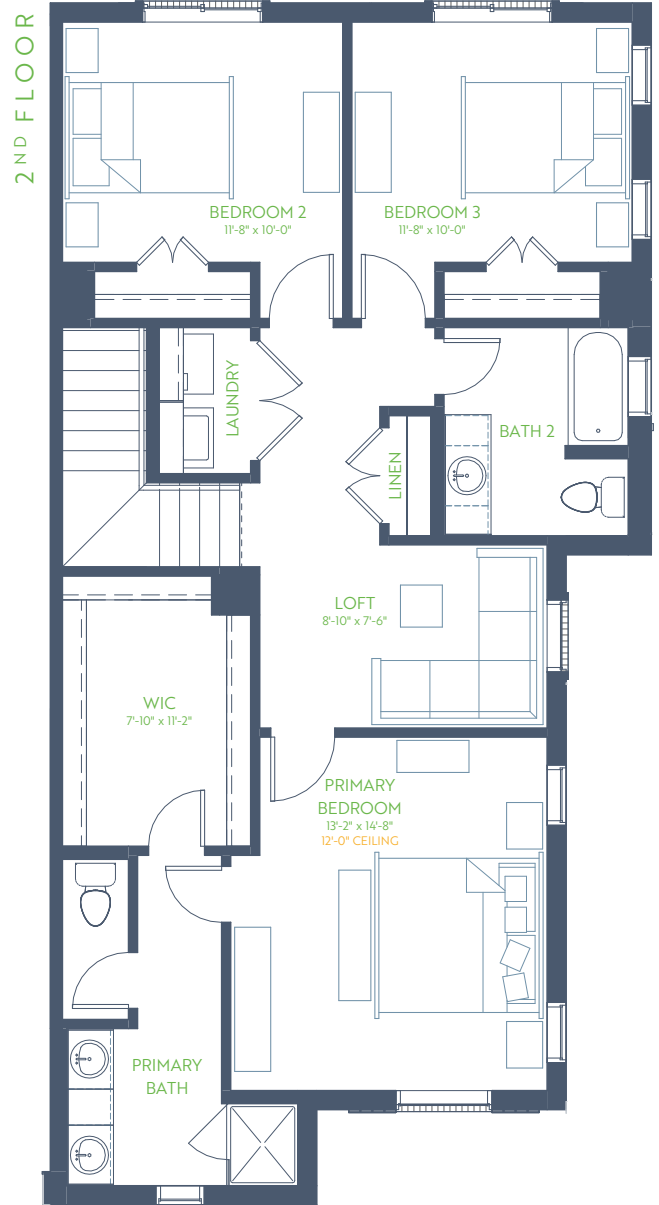
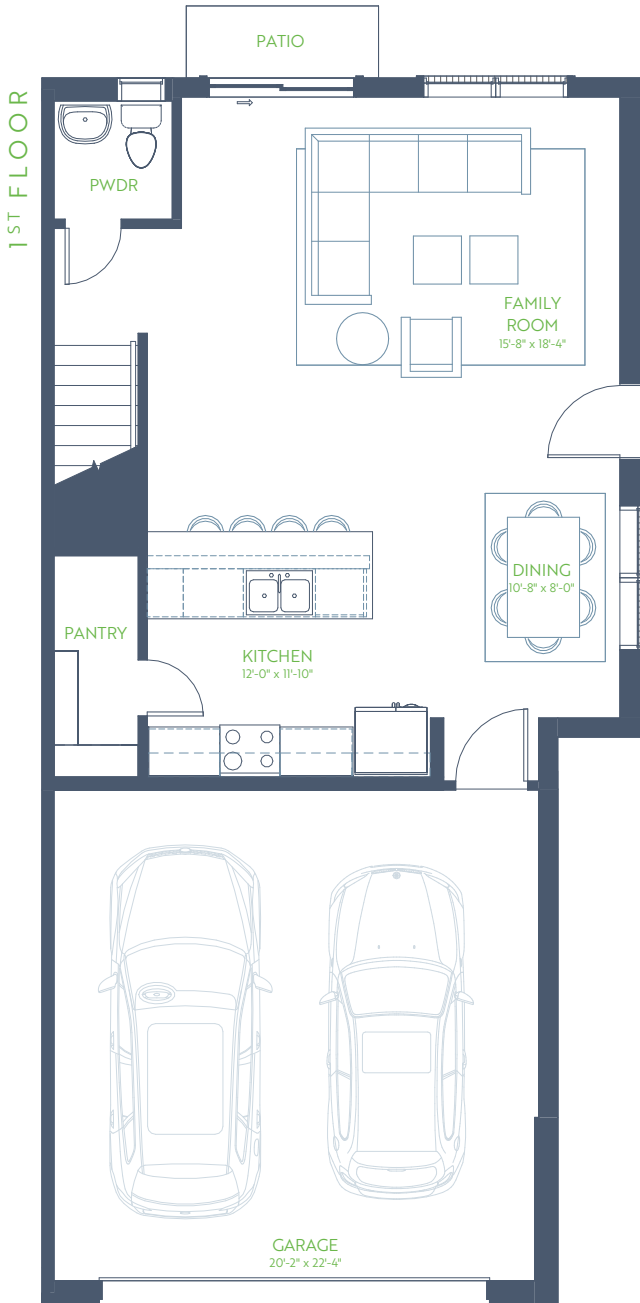


# The Onyx

WILDRIDGE TOWNHOMES

3 Bedroom • 2.5 Bath • Outdoor Living

2 Story • 1,811 sq. ft.



9' Ceiling  
Higher Where Noted



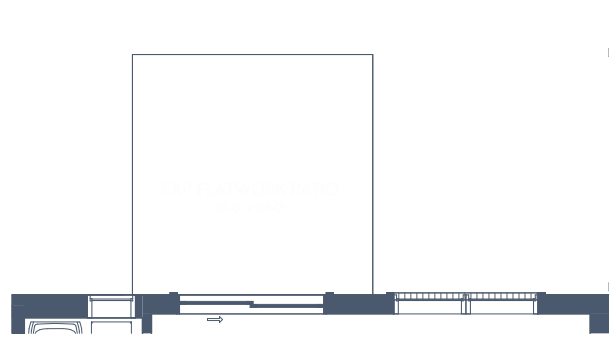
**GRENADIER HOMES**

PLAN 2572

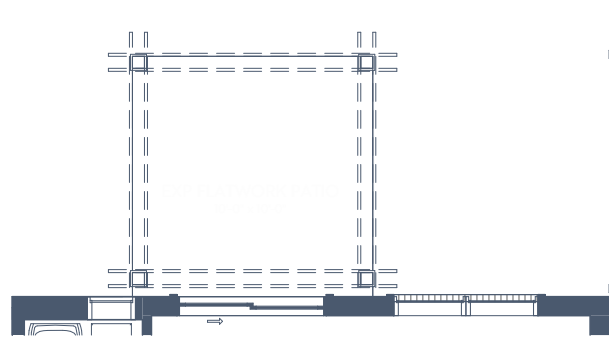
Floorplans are subject to change. There may be small differences between the plan shown and the final product purchased. We endeavor to continually improve our plans and processes, so please consult your sales counselor or the Grenadier Homes website for the most current version of this plan.

DATE: 06/27/2025





OPTIONAL EXTENDED PATIO



OPTIONAL EXTENDED PATIO  
w/OPTIONAL TRELLIS



**GRENADIER HOMES**

PLAN 2572

Floorplans are subject to change. There may be small differences between the plan shown and the final product purchased. We endeavor to continually improve our plans and processes, so please consult your sales counselor or the Grenadier Homes website for the most current version of this plan.

DATE: 06/27/2025

