

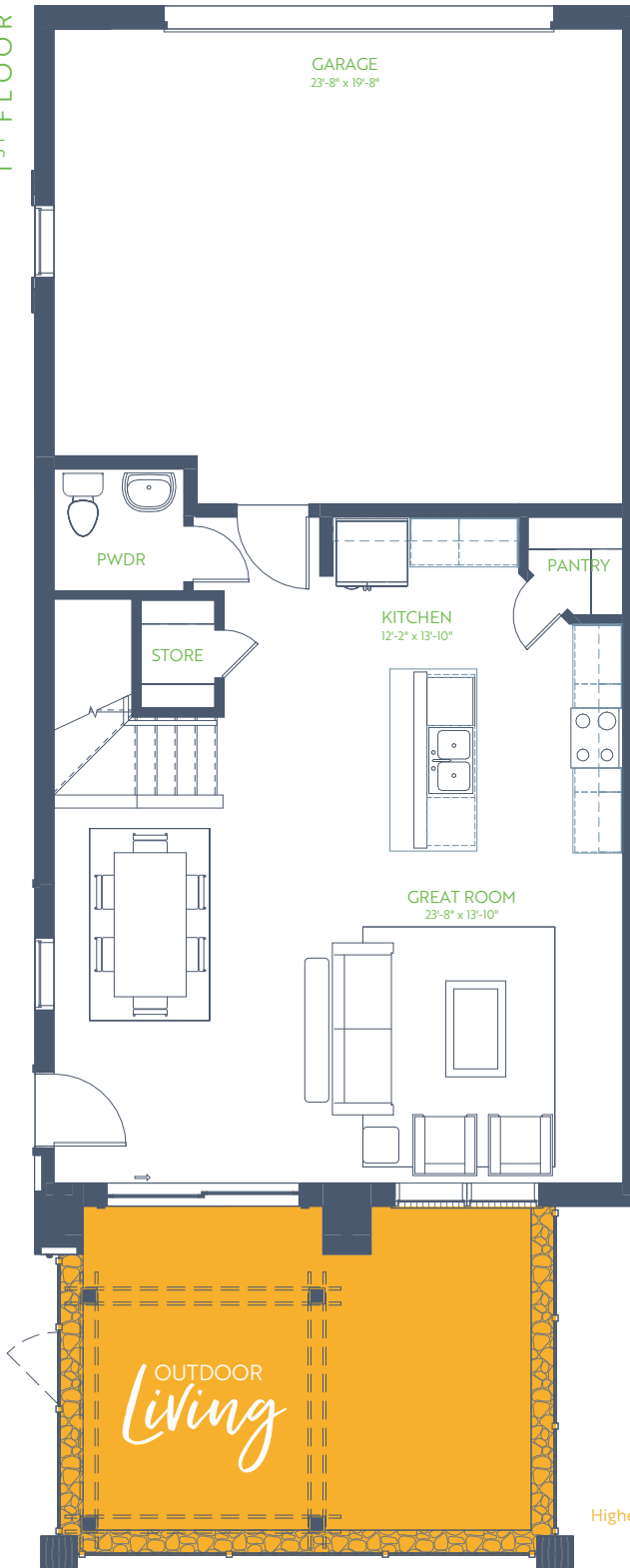
# The Augusta

THE TRIBUTE TOWNHOMES

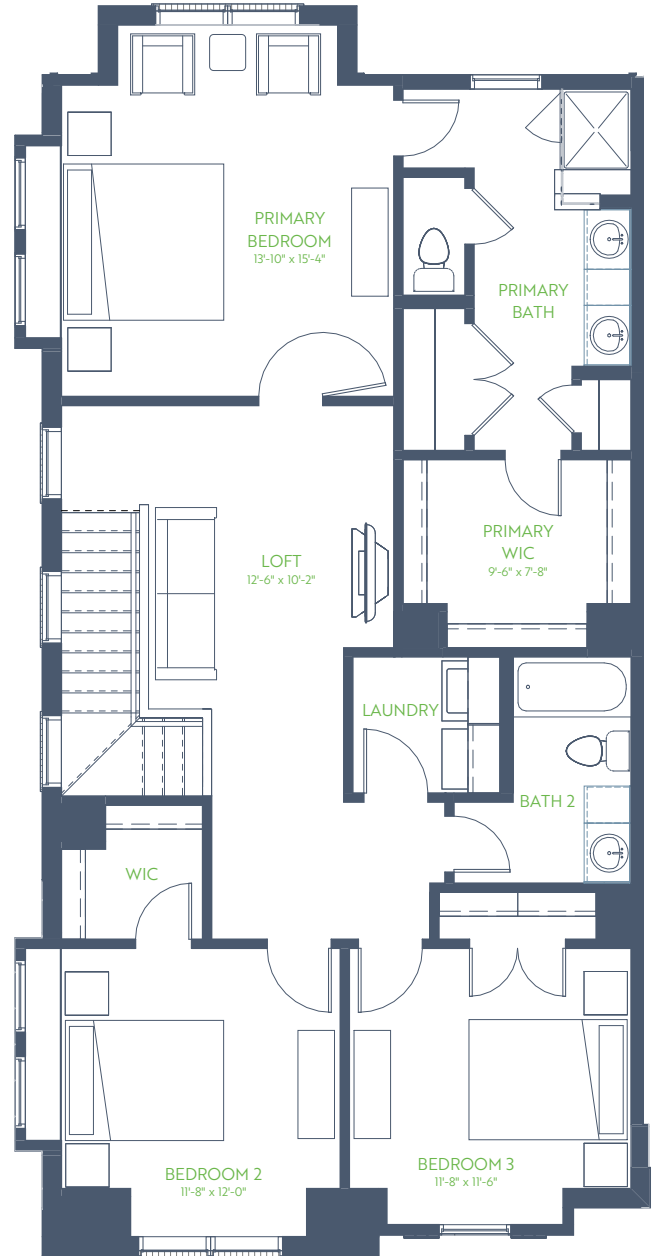
3 Bedroom • 2.5 Bath • Outdoor Living

2 Story • 1,960 sq. ft.

1ST FLOOR



2ND FLOOR



9' ↑ Ceiling  
Higher Where Noted



**GRENADIER HOMES**

Floorplans are subject to change. There may be small differences between the plan shown and the final product purchased. We endeavor to continually improve our plans and processes, so please consult your sales counselor or the Grenadier Homes website for the most current version of this plan.

PLAN 2562

DATE: 05/19/2025

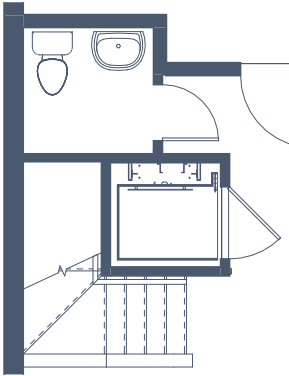


# The Augusta

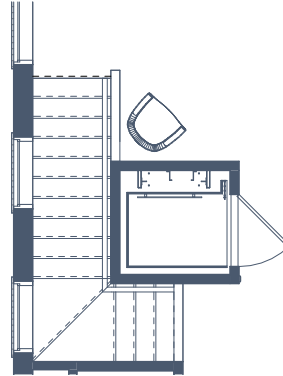
THE TRIBUTE TOWNHOMES

## FLOORPLAN OPTIONS

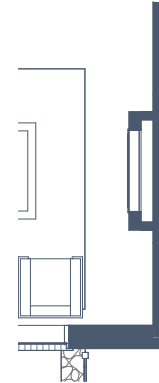
2 Story • 1,960 sq. ft.



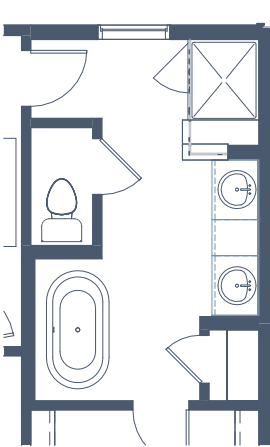
OPT FIRST FLOOR ELEVATOR



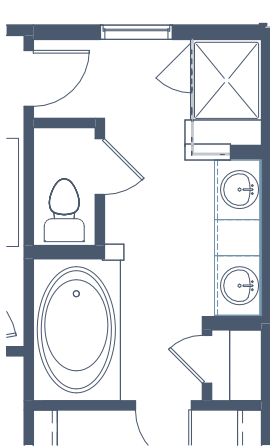
OPT SECOND FLOOR ELEVATOR



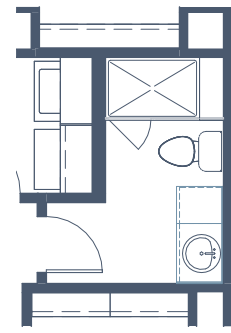
OPT ELEC FP



OPTIONAL SIENA TUB



OPTIONAL GARDEN TUB



OPT SHWR IN BATH 2



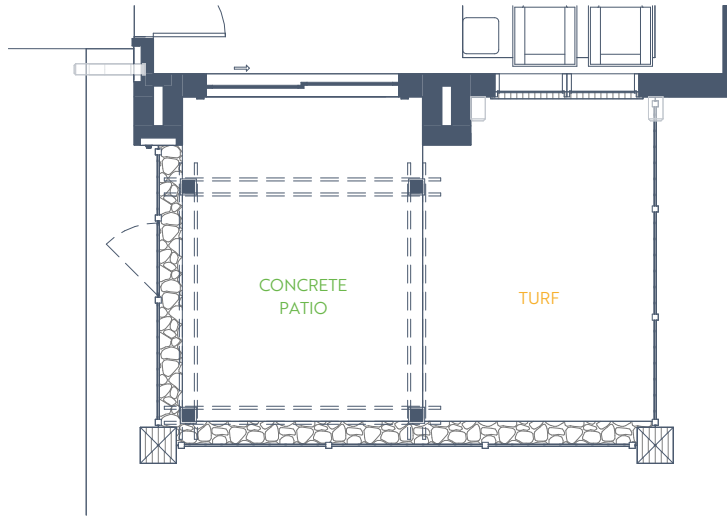
**GRENADIER HOMES**

Floorplans are subject to change. There may be small differences between the plan shown and the final product purchased. We endeavor to continually improve our plans and processes, so please consult your sales counselor or the Grenadier Homes website for the most current version of this plan.

PLAN 2562

DATE: 05/19/2025





CONCRETE PATIO w/ OPT TURF



**GRENADIER HOMES**

Floorplans are subject to change. There may be small differences between the plan shown and the final product purchased. We endeavor to continually improve our plans and processes, so please consult your sales counselor or the Grenadier Homes website for the most current version of this plan.

PLAN 2562

DATE: 05/19/2025

